



Office of General Services

DESIGN & CONSTRUCTION GROUP
THE GOVERNOR NELSON A. ROCKEFELLER
EMPIRE STATE PLAZA
ALBANY, NY 12242

ADDENDUM NO. 1 TO PROJECT NO. Q1869

CONSTRUCTION WORK REPLACE SEWER OUTFALL PIPE GREEN HAVEN CORRECTIONAL FACILITY ROUTE 216 STORMVILLE, NY

May 9, 2025

NOTE: This Addendum forms a part of the Contract Documents. Insert it in the Project Manual. Acknowledge receipt of this Addendum in the space provided on the Bid Form.

DRAWINGS

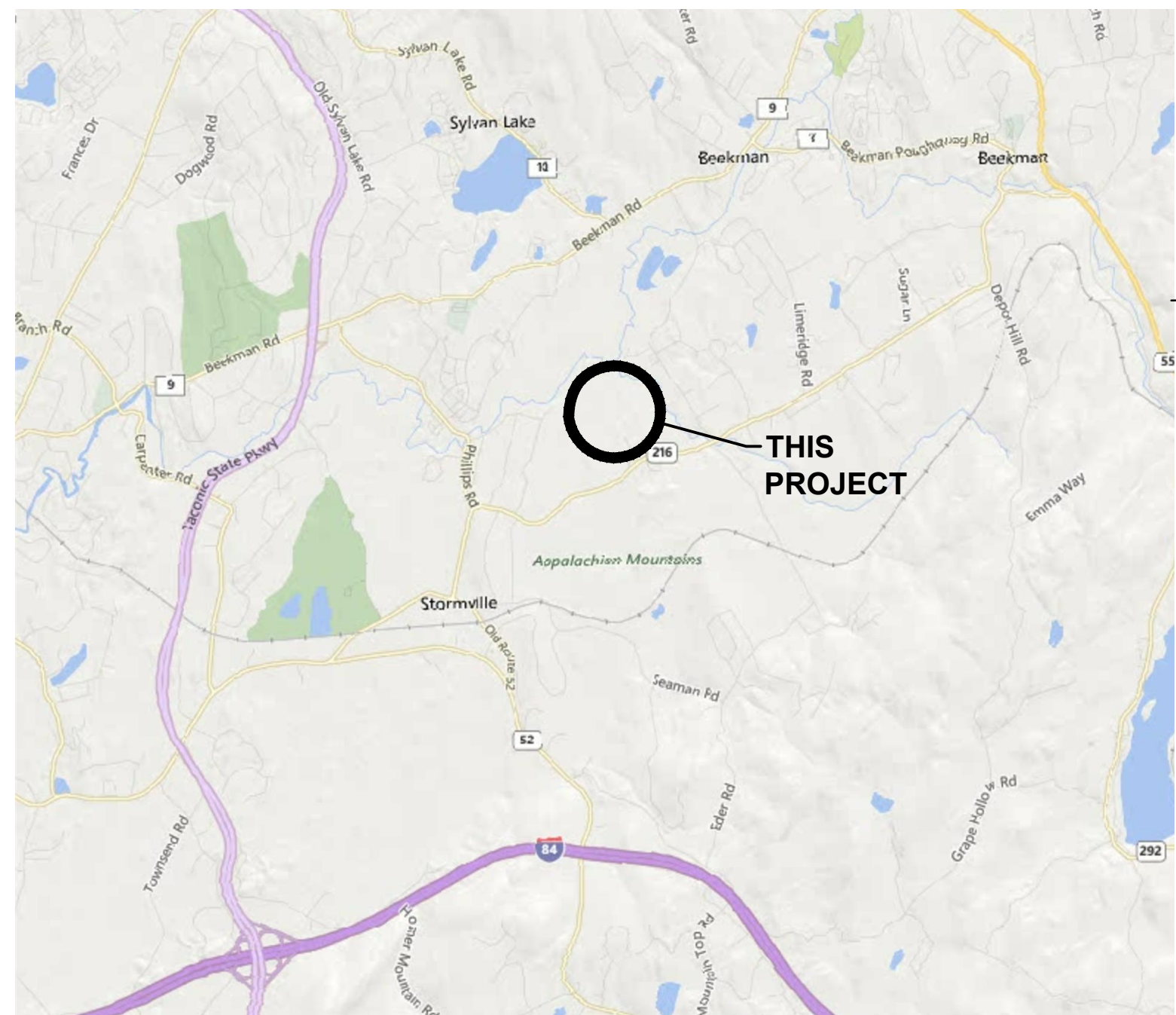
1. Revised Drawings
 - a. The drawing set that accompanies this Addendum will replace the original contract drawings in its entirety.

END OF ADDENDUM

Brady M. Sherlock, P.E.
Director, Division of Design
Design & Construction

REPLACE SEWER OUTFALL PIPE

GREEN HAVEN CORRECTIONAL FACILITY NYS ROUTE 216, STORMVILLE, NEW YORK O.G.S. PROJECT NO. Q1869-C



LOCATION PLAN
NOT TO SCALE

DRAWING LIST CONSTRUCTION WORK

- G-001 TITLE SHEET
- G-002 NOTES, LEGEND AND ABBREVIATIONS

- C-001 OVERALL KEY PLAN
- C-100 EXISTING CONDITION AND REMOVAL PLAN
- C-101 EXISTING CONDITION AND REMOVAL PLAN
- C-102 EXISTING CONDITION AND REMOVAL PLAN
- C-103 UTILITY PLAN
- C-104 UTILITY PLAN
- C-105 UTILITY PLAN
- C-200 SEWER PROFILE
- C-500 EROSION AND SEDIMENT CONTROL DETAILS
- C-501 SEWER DETAILS



NEW YORK STATE | Corrections and Community Supervision



NEW YORK STATE OF OPPORTUNITY. | Office of General Services

DESIGN & CONSTRUCTION

GENERAL NOTES:

- PROJECT CONTROL IS BASED ON N.G.S. STATION PAWLING, 1.D.# AB3878 HOLDING THE FOLLOWING PUBLISHED POSITIONAL VALUES:
NAD-83
NORTH (Y)=302,022.668 METERS (990,886.038 FEET)
EAST (X)=225,767.449 METERS (740,705.373 FEET)
NAVD-88
ELEV. (Z)=159.5 METERS (523.29 FEET)
- TOPOGRAPHY SHOWN HEREON HAS BEEN COMPILED FROM AERIAL PHOTOGRAPHY BY AIR SURVEY PHOTOGRAMMETRIC MAPPING SERVICES, DULLES, VA., COMPLETED JUNE, 2005 COMPILED BY PHOTOGRAMMETRIC METHODS FROM AERIAL PHOTOGRAPHY DATED 04-09-05, VERTICAL DATUM NAVD-88, 1" CONTOUR INTERVAL & SUPPLEMENTAL TOPOGRAPHY COMPLETED DECEMBER 2, 2010 BY CHAZEN ENGINEERING, LAND SURVEYING & LANDSCAPE ARCHITECTURE CO., P.C..
- LOCATIONS AND ELEVATIONS ARE APPROXIMATE. PROVIDE CONSTRUCTION AND CONTROL SURVEYS AND VERIFY DIMENSIONS AND RIM AND INVERT ELEVATIONS PERTINENT TO WORK OF THIS CONTRACT IN FIELD PRIOR TO SUBMITTAL OF SHOP DRAWINGS.
- RESTORE VEGETATED SURFACES THAT ARE DISTURBED IN ACCORDANCE WITH SPECIFICATION 310101 SITE RESTORATION.
- MAINTAIN SYSTEM OPERATIONS AT ALL TIMES DURING CONSTRUCTION. (REFER TO SECTION 015720)
- PROTECT EXISTING FACILITIES DURING WORK OF THIS CONTRACT. RESTORE DAMAGED FACILITIES TO THE CONDITION AT THE TIME OF THE START OF THE PROJECT OR BETTER CONDITION.
- UNDERGROUND UTILITIES SHOWN ARE APPROXIMATE AND THERE MAY BE ADDITIONAL UTILITIES NOT SHOWN. VERIFY LOCATION OF UNDERGROUND UTILITIES PRIOR TO CONSTRUCTION. PROVIDE UNDERGROUND UTILITY LOCATOR SERVICE AS SPECIFIED IN SECTION 023313 OF THE PROJECT MANUAL.
- SUSPECTED HAZARDOUS MATERIALS SUCH AS ASBESTOS CEMENT (AC) PIPE WAS NOT SPECIFICALLY IDENTIFIED ON THE SURVEY BUT SUSPECTED ASBESTOS CEMENT PIPE WAS IDENTIFIED IN THE CCTV REPORT LOCATED IN THE PROJECT MANUAL APPENDIX, IF SUSPECTED HAZARDOUS MATERIALS ARE ENCOUNTERED, REMOVE AND DISPOSE IN ACCORDANCE WITH NEW YORK STATE DEPARTMENT OF LABOR INDUSTRIAL CODE RULE 56-ASBESTOS (12 NYCRR 56).
- SUPPLY STAND ALONE POWER FOR ALL TEMPORARY MAINTENANCE OF FLOWS.
- RESTORE LAGOON PERIMETER GRAVEL ROAD TO EXISTING CONDITIONS UPON COMPLETION OF THE INSTALLATION OF THE OUTFALL SEWER.

PROJECT LOCATION AND DESCRIPTION:

RAMBOLL IS DESIGNING A NEW SEWER LINE ASSOCIATED WITH AN EXISTING WWTP ON THE GROUNDS OF THE GREEN HAVEN CORRECTIONAL FACILITY IN THE TOWN OF STORMVILLE, DUTCHESS COUNTY NEW YORK. THE PROJECT WILL OCCUR WITHIN A 3.02-ACRE SITE (THE STUDY AREA) ROUGHLY BOUNDED BY BEEKMAN ROAD TO THE NORTH, STATE ROUTE 216 TO THE SOUTH, PHILLIPS ROAD TO THE WEST, AND GREEN HAVEN ROAD TO THE EAST. THE MAJORITY OF THE STUDY AREA IS AN APPROXIMATELY 10-FOOT-WIDE, RECENTLY CLEARED, LINEAR PATHWAY WHICH COVERS AN EXISTING SEWER LINE AND HAS ADJACENT DECIDUOUS SHRUBS AND TREES. WETLAND AND STREAM DELINEATIONS WERE CONDUCTED ON JUNE 14, 2023 BY ENVIRONMENTAL DESIGN AND RESEARCH, LANDSCAPE ARCHITECTURE, ENGINEERING & ENVIRONMENTAL SERVICES, D.P.C.

POLLUTION PREVENTION MEASURES:

IN ADDITION TO THE EROSION AND SEDIMENT CONTROL MEASURES IMPLEMENTED AT THE SITE, IMPLEMENT THE FOLLOWING MEASURES TO PREVENT LITTER, CHEMICALS AND DEBRIS FROM ENTERING DISCHARGES FROM THE SITE OR INTO SENSITIVE AREAS.

- PROPERLY CONTAIN AND DISPOSE OF MATERIALS USED ON SITE.
- CLEAN UP SPILLS IMMEDIATELY.
- CONTROL LITTER BY SWEEPING AND PICKING IT UP DAILY.
- DO NOT STORE FUEL OR PETROLEUM PRODUCTS ON - SITE.
- PRACTICE GOOD HOUSEKEEPING AND EDUCATE EMPLOYEES ON POLLUTION PREVENTION MEASURES.
- STORE ON SITE MATERIALS AND CHEMICALS IN A NEAT AND ORDERLY MANNER AND IN AREAS DESIGNATED FOR SUCH STORAGE.
- DISPOSE OF GARBAGE, RUBBISH, CONSTRUCTION AND SANITARY WASTE ROUTINELY.
- IMMEDIATELY CLEAN UP ANY SEDIMENTS OR WASTE TRACKED ONTO PUBLIC HIGHWAYS OR TRANSPORTED ONTO ADJACENT PROPERTIES.
- USE DUST CONTROL METHODS.
- FOR CONSTRUCTION WASTE:
 - DESIGNATE A WASTE COLLECTION AREA.
 - PROVIDE AN ADEQUATE NUMBER OF CONTAINERS WITH LIDS OR COVERS.
 - ARRANGE FOR WASTE COLLECTION PER SECTION 015000-1.12 "RUBBISH REMOVAL".
 - COLLECT, REMOVE AND DISPOSE OF CONSTRUCTION WASTE IN APPROVED DISPOSAL AREAS.
 - MEET FEDERAL, STATE AND LOCAL REQUIREMENTS FOR DISPOSAL METHODS.
- PROVIDE AND MAINTAIN TEMPORARY SANITARY FACILITIES. REGULARLY REMOVE THE SANITARY WASTE TO MAINTAIN THE FACILITIES IN GOOD WORKING ORDER.
- IF FERTILIZERS ARE USED ON SITE:
 - LIMIT THE APPLICATION OF FERTILIZERS TO THE MINIMUM AREA REQUIRED AND USE THE MINIMUM RECOMMENDED AMOUNTS.
 - REDUCE THE EXPOSURE OF FERTILIZERS TO STORM WATER RUN OFF BY WORKING THE FERTILIZER INTO THE SOIL.
 - APPLY FERTILIZER MORE FREQUENTLY BUT AT A LOWER APPLICATION RATE.
- PROVIDE DUST CONTROL FROM COMMENCEMENT OF CONSTRUCTION ACTIVITIES TO FINAL SITE STABILIZATION.

STAGING AREAS:

- LOCATE STAGING AREA AS SHOWN OR DIRECTED BY THE DIRECTOR'S REPRESENTATIVE.

WINTER OPERATIONS:

FOR WINTER OPERATIONS:

- INSTALLATION AND MAINTENANCE OF EROSION AND SEDIMENT CONTROL DEVICES SHALL CONTINUE PER THE DRAWINGS.
- STABILIZE ALL BARE SOILS WITH ESTABLISHED VEGETATION, STRAW, MATTING, ROCK OR EROSION CONTROL PRODUCTS.
- INSTALL EROSION AND SEDIMENT CONTROL DEVICES IN ALL SENSITIVE AREAS AND ALONG THE PERIMETER.
- SOIL STOCKPILES MUST BE PROTECTED WITH SILT FENCE PROTECTION AROUND THE PERIMETER AND STABILIZED WITH ESTABLISHED VEGETATION, STRAW, ROLLED EROSION CONTROL PRODUCT OR DURABLE COVERINGS.

CONSTRUCTION NOTES:

- NOTIFY UDIG NY PRIOR TO BEGINNING CONSTRUCTION.
- CONTRACTOR TO REMOVE ONE REACH AT A TIME WHILE BYPASS PUMPING THAT REACH. EACH REACH TO BE TIED BACK INTO EXISTING SEWER AT THE END OF EACH DAY TO AVOID THE NEED TO BYPASS PUMP OVERNIGHT.

DEMOLITION NOTES:

- CONTRACTOR RESPONSIBLE FOR ALL DISCONNECTIONS AND/OR RELOCATION OF EXISTING UTILITIES. COORDINATE ALL WORK AFFECTING UTILITIES WITH THE DIRECTOR'S REPRESENTATIVE.
- EXISTING CONDITIONS ARE TAKEN FROM FIELD OBSERVATIONS AND PRIOR DESIGN DOCUMENTS WHERE AVAILABLE AND ARE NOT GUARANTEED. NOT ALL DEVICES, TERMINATIONS, JUNCTION BOXES AND WIRING HAVE BEEN SHOWN. COORDINATE WITH DIRECTOR'S REPRESENTATIVE PRIOR TO PERFORMING ANY DEMOLITION WORK.
- PROPERLY DISPOSE OFFSITE ALL MANHOLES AND SEWER LINES REMOVED AS PART OF THIS PROJECT.
- REMOVE AND DISPOSE OFFSITE ALL BRUSH AND TREES WITHIN 3' OF TRENCH LIMITS.

GENERAL SECURITY NOTES:

- ALL WORK MUST BE PERFORMED IN SUCH A MANNER SO AS TO MAINTAIN FACILITY SECURITY AT ALL TIMES IN STRICT ACCORDANCE WITH SECTION 015633 OF THE PROJECT MANUAL.

REMOVALS NOTES:

- DISPOSE OF SPOIL AND MISCELLANEOUS DEMOLITION MATERIAL OFF-SITE UNLESS OTHERWISE DIRECTED BY THE DIRECTOR'S REPRESENTATIVE. NO BURNING OF DEBRIS SHALL BE ALLOWED.
- PROTECT UTILITIES, MANHOLES, CATCH BASINS, VALVE BOXES, FRAMES, COVERS AND GRATES REMAINING IN USE.

UTILITY NOTES:

- MEET AASHTO H25 LOADING REQUIREMENTS FOR ALL STRUCTURES.
- GIVE SPECIAL ATTENTION TO EXISTING UTILITIES SO THEY ARE NOT DISTURBED DURING CONSTRUCTION. ANY DAMAGES TO EXISTING UTILITIES MUST BE REPAIRED BY THE CONTRACTOR AT NO ADDITIONAL COST TO THE STATE.

CODE REQUIREMENTS:

- PROVIDE SAFEGUARDS DURING CONSTRUCTION INCLUDING BUT NOT LIMITED TO THE FOLLOWING CODES AND STANDARDS:
 - OSHA (OCCUPATIONAL SAFETY AND HEALTH ADMINISTRATION)
 - 2020 EXISTING CODE OF NEW YORK STATE CHAPTER 15 CONSTRUCTION SAFE GUARDS.
 - 2020 FIRE CODE OF NEW YORK STATE (THE "FIRE CODE")
 - ALL OTHER STANDARDS REFERENCED IN 19 NYCRR PARTS 1219 THROUGH 1228.
- REFER TO SPECIFICATION SECTION 014100 REGULATORY REQUIREMENTS FOR ADDITIONAL INFORMATION. DEMONSTRATE COMPLIANCE WITH REGULATORY REQUIREMENTS IN THE SITE SPECIFIC SAFETY PLAN.
- COMPLY WITH THE FOLLOWING FOR WORK INCLUDED UNDER THIS PROJECT:

DESCRIPTION	WORK AREA
CLASSIFICATION OF WORK	REPAIRS
OCCUPANCY CLASSIFICATION	N/A
CONSTRUCTION CLASSIFICATION	N/A
CODE COMPLIANCE METHOD	N/A
LARGEST FLOOR AREA	N/A

- THIS PROJECT IS IN COMPLIANCE WITH THE 2020 ENERGY CODE AND THE 2020 UNIFORM ENERGY CODE.

LIFE/SAFETY NOTES:

- ALL MANHOLES AND CATCH BASINS ARE TO BE CONSIDERED CONFINED SPACES AND/OR PERMIT REQUIRED CONFINED SPACES. COMPLY WITH CONFINED SPACE AND PERMIT REQUIRED CONFINED SPACE AS DEFINED IN TITLE 29, PART 1910, SECTION 146 OF THE CODE OF FEDERAL REGULATIONS (29CFR 1910.146). INDICATED CONFINED SPACES ARE NOT INTENDED TO LIMIT OR DEFINE CONTRACTOR'S OR SUBCONTRACTOR'S REGULATORY COMPLIANCE REQUIREMENTS. IN ADDITION, OTHER CONFINED SPACES MAY BE PRESENT OR CREATED BY THE WORK OF THIS CONTRACT. NOTIFY THE DIRECTOR'S REPRESENTATIVE, IN WRITING, OF CONFINED SPACES CREATED OR ELIMINATED DURING EXECUTION OF THE WORK.

EROSION & SEDIMENT CONTROL NOTES:

- PROVIDE AND MAINTAIN EROSION AND SEDIMENT CONTROL FACILITIES IN ACCORDANCE WITH THE NEW YORK STATE STANDARDS FOR EROSION AND SEDIMENT CONTROL, USACE NATIONWIDE PERMITS, NYSEDC BLANKEY WATER QUALITY CERTIFICATE, AND THESE CONTRACT DOCUMENTS.
- PROVIDE SOIL EROSION AND SEDIMENT CONTROL FEATURES PRIOR TO SITE DISTURBANCE AND MAINTAIN IN EFFECTIVE CONDITION UNTIL THE SITE HAS BEEN STABILIZED AND APPROVED BY THE DIRECTOR'S REPRESENTATIVE. REMOVE FEATURES, REGRADE WHERE NECESSARY, AND SEED AND MULCH UPON COMPLETION OF CONSTRUCTION.
- PREVENT CONTAMINATION OF WATERWAYS BY SUSPENDED SOLIDS, SEDIMENTS, FUELS, SOLVENTS, LUBRICANTS, EPOXY COATINGS, PAINTS, CONCRETE, LEACHATE, OR OTHER ENVIRONMENTALLY DELETERIOUS MATERIALS ASSOCIATED WITH THE PROJECT WORK.
- REDUCE THE DISTURBANCE OF VEGETATIVE SOIL COVER TO THE MINIMUM REQUIRED BY THE WORK.
- PROVIDE SILT FENCE PRIOR TO DISTURBANCE OF EXISTING SOIL SURFACE INSPECTED AND MAINTAINED REGULARLY DURING CONSTRUCTION ACTIVITIES.
- PROVIDE TURBIDITY CURTAIN IN FISHKILL CREEK AT OUTLET OF STORM SEWER PRIOR TO ANY IN STREAM WORK. TURBIDITY CURTAIN SHALL ENCLOSE ENTIRE WORK AREA.
- IMMEDIATELY CORRECT DEFICIENCIES.
- PROVIDE, MAINTAIN AND REMOVE ADDITIONAL EROSION CONTROL MEASURES AS ORDERED BY THE DIRECTOR'S REPRESENTATIVE.
- TOPSOIL SPREAD TO A MINIMUM 4-INCH THICKNESS TO BRING THE SITE TO FINISHED GRADE IN AREAS NOT PAVED OR WHERE VEGETATION IS TO BE REMOVED.
- SCARIFY AREAS WHICH ARE TO BE TOPSOILED TO A MINIMUM DEPTH OF THREE INCHES PRIOR TO PLACEMENT OF TOPSOIL.
- PROVIDE AND MAINTAIN STABILIZED CONSTRUCTION ENTRANCE AND WASH VEHICLE WHEELS IN A SAFE DISPOSAL AREA. REMOVE MATERIALS DEPOSITED ONTO THOROUGHFARE(S) IMMEDIATELY. PROPER PRECAUTIONS SHOULD BE TAKEN TO ENSURE THAT MATERIALS DEPOSITED ONTO THOROUGHFARES ARE REMOVED SO THAT THEY DO NOT ENTER DRAINAGE SYSTEMS. SWEEP ROADS UTILIZED DURING CONSTRUCTION ON A DAILY BASIS WHEN TRUCKS ARE BEING UTILIZED OR AS ORDERED BY THE DIRECTOR'S REPRESENTATIVE.
- PROVIDE ADEQUATE RESERVE OF EROSION CONTROL MATERIALS ON SITE FOR EMERGENCY OR ROUTINE REPLACEMENT.
- CLEAN TEMPORARY EROSION CONTROL STRUCTURES WHEN THEY REACH 50% CAPACITY.

EROSION AND SEDIMENT CONTROL INSPECTION AND MAINTENANCE SCHEDULE:

- INSPECT REMAINING EROSION AND SEDIMENT CONTROL DEVICES AFTER EACH RAIN EVENT AND ON A WEEKLY BASIS. MAINTENANCE, REPAIR AS NEEDED IMMEDIATELY OR AS DIRECTED BY THE DIRECTOR'S REPRESENTATIVE.

BYPASS PUMPING OF SEWER FLOWS:

- BYPASS PUMPING OF SEWER FLOWS TO BE IN ACCORDANCE WITH SECTION 015720.

WETLAND/STREAM CONSTRUCTION NOTES:

- ADHERE TO THE CONDITIONS OF THE U.S. ARMY CORPS OF ENGINEERS NATIONWIDE PERMITS EFFECTIVE MARCH 19, 2021, AND NEW YORK STATE DISTRICT REGIONAL CONDITIONS DATED MARCH 21, 2021 AND ADDENDA THERETO
- MINIMIZE THE DURATION OF CONSTRUCTION RELATED DISTURBANCE WITHIN WETLANDS OR STREAMS TO THE MAXIMUM EXTENT PRACTICABLE.
- CUT THE MINIMUM AMOUNT NECESSARY OF VEGETATION OFF AT GROUND LEVEL, LEAVING EXISTING ROOT SYSTEMS INTACT EXCEPT OVER THE TRENCH LINE. REMOVE VEGETATIVE DEBRIS FROM THE WETLAND FOR DISPOSAL.
- IF STANDING WATER OR SATURATED SOILS ARE PRESENT, USE LOW GROUND PRESSURE CONSTRUCTION EQUIPMENT, OR OPERATE NORMAL EQUIPMENT ON TIMBER MATS. TIMBER MATS TREATED WITH PENTACHLOROPHENOL OR FRESHLY TREATED WITH CREOSOTE SHALL NOT BE USED.
- SEDIMENT BARRIERS SHALL BE INSTALLED ALONG BOUNDARIES OF ALL WETLANDS OR STREAMS WITHIN THE PROJECT AREA. SEDIMENT BARRIERS SHALL BE PROPERLY MAINTAINED THROUGHOUT CONSTRUCTION AND REINSTALLED AS NECESSARY.
- REFUELING OF CONSTRUCTION EQUIPMENT SHALL TAKE PLACE AT LEAST 300 FEET FROM A WETLAND OR WATERBODY BOUNDARY.
- TRENCH DEWATERING SHALL BE ACCOMPLISHED BY USING A PORTABLE PUMP THAT DISCHARGES INTO GEOTEXTILE FILTER BAGS AND/OR STRAW BALE AND FIBER ROLLS SYSTEMS IN UPLANDS AREA TO MINIMIZE SILT-LADEN WATER FLOWS INTO WETLANDS OR OTHER WATERBODIES.
- IF CONSTRUCTION TAKES PLACE WHEN SIGNIFICANT AMOUNTS OF RUNNING WATER ARE FLOWING THROUGH WETLAND AREA OR DITCHES, A SUITABLE DRY CROSSING METHOD, SUCH AS FLUME PIPE OR PUMP AROUND METHOD SHALL BE EMPLOYED.
- DURING CONSTRUCTION, WETLANDS AND OTHER WATERS OF THE U.S. LOCATED DOWNSTREAM WITHIN 0.5 MILE OF THE DAM SHALL BE MONITORED AS NECESSARY FOR SIGNS OF TURBIDITY OF SILTATION. IF SUCH CONDITIONS ARE NOTED, EROSION AND SEDIMENT CONTROL SUCH AS FIBER ROLLS SHALL BE ESTABLISHED AND CONSTRUCTION PRACTICES SHALL BE MODIFIED TO AVOID OR MINIMIZE THE PROBLEM TO THE MAXIMUM EXTENT PRACTICABLE.
- EXCESS BACKFILL MATERIAL SHALL BE PLACED AND GRADED WITHIN THE APPROVED DISTURBANCE LIMITS UPON COMPLETION OF CONSTRUCTION.
- TIMBER MATS AND CONSTRUCTION DEBRIS SHALL BE REMOVED FROM WETLAND AREAS UPON COMPLETION OF CONSTRUCTION.
- ALL AREAS OF SOIL DISTURBANCE SHALL BE SEEDED MULCHED WITH WEED FREE STRAW WITHIN 24 HOURS, BUT NO LATER THAN OCTOBER 1 OF ANY CALENDAR YEAR. STRAW MULCH SHALL BE MAINTAINED UNTIL A 95% VEGETATIVE COVER IS ESTABLISHED. NO FERTILIZER OR LIME SHALL BE APPLIED IN WETLANDS.

EXISTING LEGEND

<p>551 CONTOUR LINE (MINOR) (DASHED)</p> <p>555 CONTOUR LINE (MAJOR) (HIDDEN)</p> <p>523.63 429x3 SPOT ELEVATION BY CONVENTIONAL SURVEY</p> <p>429x3 SPOT ELEVATION BY PHOTOGRAMMETRY</p> <p>--- PROPERTY LINE</p> <p>--- EASEMENT LINE</p> <p>○ FENCE (CHAIN LINK)</p> <p>— x — FENCE (WOOD, ETC.)</p> <p>⊕ GATES</p> <p>⊕ ELEC./POWER MANHOLE</p> <p>⊕ YARD LIGHT</p> <p>○ UTILITY POLE</p> <p>— OH — OVERHEAD UTILITIES</p> <p>— E — ELECTRIC/POWER</p> <p>⊕ LIGHT POLE</p> <p>⊕ SIGNAL MANHOLE</p> <p>— S — SIGNAL</p> <p>— T — TELEPHONE</p> <p>○ SANITARY MANHOLE</p> <p>— SANITARY LINE</p> <p>□ CATCH BASIN</p> <p>○ STORM MANHOLE</p> <p>— SD — STORM LINE</p> <p>— G — GAS LINE</p> <p>⊕ HYDRANT</p> <p>⊕ PIV POST INDICATOR VALVE</p> <p>⊕ VALVE</p> <p>⊕ METER PIT</p> <p>— W — WATER LINE</p> <p>RIM 516.54 TOP OF FRAME ELEVATION</p> <p>(N) INV. IN=512.44 (8") INVERT ELEVATION, DIRECTION OF PIPE, AND SIZE</p>	<p>⊕ BOL BOLLARD</p> <p>— SIGNS</p> <p>⊕ FLAG POLE</p> <p>⊕ GRID (TEXT)</p> <p>--- VEGETATION LINE</p> <p>⊕ DECIDUOUS TREE</p> <p>⊕ EVERGREEN TREE</p> <p>⊕ STUMP</p> <p>⊕ BUSH</p> <p>⊕ DELINEATED WETLANDS</p> <p>--- PONDS, STREAMS, ETC.</p> <p>--- GUIDE RAIL</p> <p>△ CP 20 CONTROL POINT</p> <p>⊕ BOUNDARY MONUMENT</p> <p>⊕ PROPERTY PIN</p> <p>⊕ BM #1 EL. 543.29 BENCHMARK</p> <p>--- DESTINATION OF PIPE IS UNKNOWN</p> <p>○ COULD NOT OPEN</p> <p>□ VAULT CLOSED VAULT</p>
--------------------------------------------------------------------------------------------------------------------------------------------------------------------------------------------------------------------------------------------------------------------------------------------------------------------------------------------------------------------------------------------------------------------------------------------------------------------------------------------------------------------------------------------------------------------------------------------------------------------------------------------------------------------------------------------------------------------------------------------------------------------------------------------------------------------------------------------------------------------------------------------------------------------------------------	----------------------------------------------------------------------------------------------------------------------------------------------------------------------------------------------------------------------------------------------------------------------------------------------------------------------------------------------------------------------------------------------------------------------------------------------------------------------------------------

PROPOSED LEGEND

SEWER PLAN LEGEND

<p>ABANDON SEWER PIPE IN PLACE</p> <p>REMOVE SEWER PIPE</p> <p>— RS — REPLACE SEWER PIPE</p> <p>— NS — PROVIDE SEWER PIPE</p> <p>— CLL — CONTRACT LIMIT LINE</p> <p>— SF — SILT FENCE</p> <p>— TC — TURBIDITY CURTAIN</p> <p>N.MH #5 ⊕ PROVIDE SEWER MANHOLE</p>	<p>REPLACE SEWER PIPE</p> <p>EXISTING MANHOLE</p> <p>PROVIDE MANHOLE</p>
------------------------------------------------------------------------------------------------------------------------------------------------------------------------------------------------------------------------------------------------------------------	--------------------------------------------------------------------------

SEWER PROFILE LEGEND

ABBREVIATIONS

PIPING SERVICE IDENTIFICATION

ST	STORM SEWER
W	WATER

PIPE MATERIALS

AC	ASBESTOS CEMENT
CMP	CORRUGATED METAL PIPE
DIP	DUCTILE IRON PIPE
PVC	POLYVINYL CHLORIDE
VCP	VITRIFIED CLAY PIPE

MISCELLANEOUS

⊕	SURVEY BASELINE
BM	BENCHMARK
BOL	POLLARD
CLL	CONTRACT LIMIT LINE
CONC.	CONCRETE
EL.	ELEVATION
EOP	EDGE OF PAVEMENT
ELEC.	ELECTRIC
E&SC	EROSION & SEDIMENT CONTROL
EXIST.	EXISTING
GLL	GRADING LIMIT LINE
INV.	INVERT
LF	LINEAR FEET
OHE	OVERHEAD ELECTRIC
SF	SILT FENCE
TYP.	TYPICAL
WW	EXISTING WATER VALVE

Office of General Services

DESIGN & CONSTRUCTION

CONSULTANT

CERTIFICATE OF AUTHORIZATION #1482116

RAMBOLL AMERICAS
ENGINEERING SOLUTIONS, INC.

RAVI ENGINEERING & LAND SURVEYING, P.C.

WARNING:

THE ALTERATION OF THIS MATERIAL IN ANY WAY, UNLESS DONE UNDER THE DIRECTION OF A COMPARABLE PROFESSIONAL, I.E. ARCHITECT FOR AN ARCHITECT, ENGINEER FOR AN ENGINEER OR LANDSCAPE ARCHITECT FOR A LANDSCAPE ARCHITECT, IS A VIOLATION OF THE NEW YORK STATE EDUCATION LAW AND/OR REGULATIONS AND IS A CLASS "A" MISDEMEANOR.

P.E. LICENCE EXPIRES: 04/30/2027

P.E. LICENCE EXPIRES: 03/31/2027

CONTRACT: CONSTRUCTION

TITLE: REPLACE SEWER OUTFALL PIPE

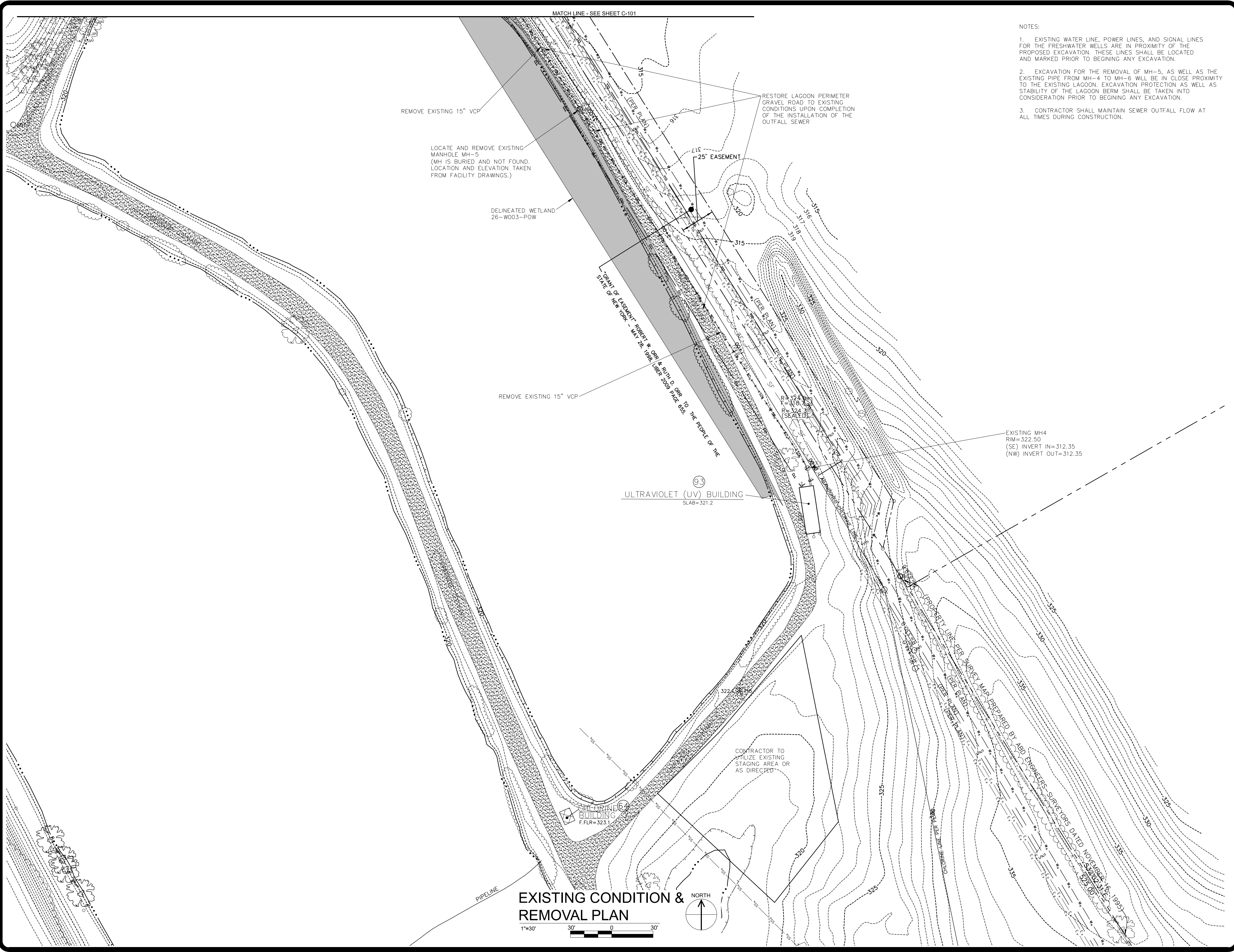
LOCATION: GREEN HAVEN CORRECTIONAL FACILITY ROUTE 216 STORMVILLE, NEW YORK

CLIENT: DEPARTMENT OF CORRECTIONS AND COMMUNITY SUPERVISION

MARK	DATE	DESCRIPTION
0	02/26/2025	FINAL SUBMITTAL
PROJECT NUMBER:	Q1869-C	
DESIGNED BY:	D. CLARK	
DRAWN BY:	W. DILONE	
FIELD CHECK:		
APPROVED:		
SHEET TITLE:	NOTES, LEGEND AND ABBREVIATIONS	
DRAWING NUMBER:	G-002	
SHEET	2	OF 12

ENERGY CODE STATEMENT:
TO THE BEST OF THE REGISTERED DESIGN PROFESSIONALS KNOWLEDGE, BELIEF AND PROFESSIONAL JUDGEMENT, THESE PLANS AND/OR SPECIFICATIONS ARE IN COMPLIANCE WITH THE 2020 ENERGY CODE.

UNIFORM CODE STATEMENT:
TO THE BEST OF THE REGISTERED DESIGN PROFESSIONALS KNOWLEDGE, BELIEF AND PROFESSIONAL JUDGEMENT, THESE PLANS AND/OR SPECIFICATIONS ARE IN COMPLIANCE WITH THE 2020 UNIFORM CODE.



- NOTES:
- EXISTING WATER LINE, POWER LINES, AND SIGNAL LINES FOR THE FRESHWATER WELLS ARE IN PROXIMITY OF THE PROPOSED EXCAVATION. THESE LINES SHALL BE LOCATED AND MARKED PRIOR TO BEGINNING ANY EXCAVATION.
 - EXCAVATION FOR THE REMOVAL OF MH-5, AS WELL AS THE EXISTING PIPE FROM MH-4 TO MH-6 WILL BE IN CLOSE PROXIMITY TO THE EXISTING LAGOON. EXCAVATION PROTECTION AS WELL AS STABILITY OF THE LAGOON BERM SHALL BE TAKEN INTO CONSIDERATION PRIOR TO BEGINNING ANY EXCAVATION.
 - CONTRACTOR SHALL MAINTAIN SEWER OUTFALL FLOW AT ALL TIMES DURING CONSTRUCTION.

WARNING:
THE ALTERATION OF THIS MATERIAL IN ANY WAY, UNLESS DONE UNDER THE DIRECTION OF A COMPARABLE PROFESSIONAL, I.E. ARCHITECT FOR AN ARCHITECT, ENGINEER FOR AN ENGINEER OR LANDSCAPE ARCHITECT FOR A LANDSCAPE ARCHITECT, IS A VIOLATION OF THE NEW YORK STATE EDUCATION LAW AND/OR REGULATIONS AND IS A CLASS "A" MISDEMEANOR.



P.E. LICENCE EXPIRES: 04/30/2027
P.E. LICENCE EXPIRES: 03/31/2027

CONTRACT: CONSTRUCTION

TITLE: REPLACE SEWER OUTFALL PIPE

LOCATION: GREEN HAVEN CORRECTIONAL FACILITY
ROUTE 216 STORMVILLE, NEW YORK

CLIENT: DEPARTMENT OF CORRECTIONS
AND COMMUNITY SUPERVISION

MARK	DATE	DESCRIPTION
0	02/26/2025	FINAL SUBMITTAL
PROJECT NUMBER: Q1869-C		
DESIGNED BY: D. CLARK		
DRAWN BY: W. DILONE		
FIELD CHECK:		
APPROVED:		

SHEET TITLE:
EXISTING CONDITION AND REMOVAL PLAN

DRAWING NUMBER:
C-100



EXISTING OUTLET STRUCTURE

NOTES:

- EXISTING WATER LINE, POWER LINES, AND SIGNAL LINES FOR THE FRESHWATER WELLS ARE IN PROXIMITY OF THE PROPOSED EXCAVATION. THESE LINES SHALL BE LOCATED AND MARKED PRIOR TO BEGINNING ANY EXCAVATION.
- CONTRACTOR SHALL MAINTAIN SEWER OUTFALL FLOW AT ALL TIMES DURING CONSTRUCTION.

DESIGN & CONSTRUCTION

CONSULTANT
CERTIFICATE OF AUTHORIZATION #1482116



RAMBOLL AMERICAS
ENGINEERING SOLUTIONS, INC.

RAVI ENGINEERING & LAND SURVEYING, P.C.

WARNING:

THE ALTERATION OF THIS MATERIAL IN ANY WAY, UNLESS DONE UNDER THE DIRECTION OF A COMPARABLE PROFESSIONAL, I.E. ARCHITECT FOR AN ARCHITECT, ENGINEER FOR AN ENGINEER OR LANDSCAPE ARCHITECT FOR A LANDSCAPE ARCHITECT, IS A VIOLATION OF THE NEW YORK STATE EDUCATION LAW AND/OR REGULATIONS AND IS A CLASS "A" MISDEMEANOR.



P.E. LICENCE EXPIRES: 04/30/2027

P.E. LICENCE EXPIRES: 03/31/2027

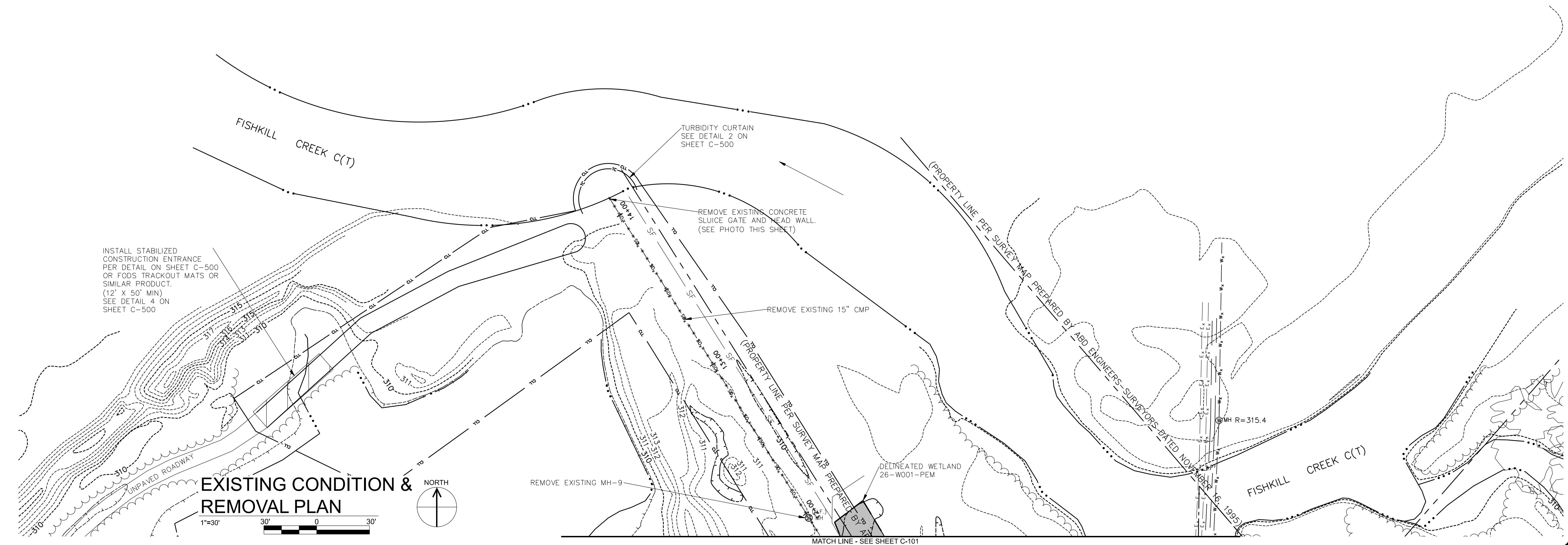
CONTRACT: CONSTRUCTION

TITLE: REPLACE SEWER OUTFALL PIPE

LOCATION: GREEN HAVEN CORRECTIONAL FACILITY
ROUTE 216 STORMVILLE, NEW YORK

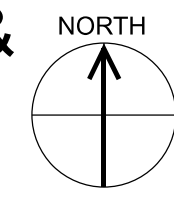
CLIENT: DEPARTMENT OF CORRECTIONS
AND COMMUNITY SUPERVISION

36x24 PLOT SHEET



EXISTING CONDITION & REMOVAL PLAN

1"=30'



MATCH LINE - SEE SHEET C-101

MARK	DATE	DESCRIPTION
0	02/26/2025	FINAL SUBMITAL

PROJECT NUMBER: Q1869-C
DESIGNED BY: D. CLARK
DRAWN BY: W. DILONE
FIELD CHECK:
APPROVED:

SHEET TITLE:
EXISTING CONDITION AND REMOVAL PLAN

DRAWING NUMBER:
C-102

MATCH LINE - SEE SHEET C-104

INSTALL 312.5 LF OF 15" SDR-35 PVC AT 0.50% SLOPE

DELINEATED WETLAND 26-W003-POW

INSTALL 276 LF OF 15" SDR-35 PVC AT 0.65% SLOPE

ULTRAVIOLET (UV) BUILDING SLAB=321.2

N.MH5 RIM=321.40 (SE) INVERT IN=310.55 (NW) INVERT OUT=310.45

- NOTES:
- EXISTING WATER LINE, POWER LINES, AND SIGNAL LINES FOR THE FRESHWATER WELLS ARE IN PROXIMITY OF THE PROPOSED EXCAVATION. THESE LINES SHALL BE LOCATED AND MARKED PRIOR TO BEGINNING ANY EXCAVATION.
 - EXCAVATION FOR THE REMOVAL OF MH-5, AS WELL AS THE EXISTING PIPE FROM MH-4 TO MH-6 WILL BE IN CLOSE PROXIMITY TO THE EXISTING LAGOON. EXCAVATION PROTECTION AS WELL AS STABILITY OF THE LAGOON BERM SHALL BE TAKEN INTO CONSIDERATION PRIOR TO BEGINNING ANY EXCAVATION.
 - RESTORATION OF DISTURBED WETLANDS SHALL BE SEEDED WITH THE WETLAND SEED MIX "D" IDENTIFIED IN THE PROJECT SPECIFICATIONS. ALL OTHER AREAS TO BE SEEDED SEED MIX "F" IDENTIFIED IN THE PROJECT SPECIFICATIONS.
 - CONTRACTOR SHALL MAINTAIN SEWER OUTFALL FLOW AT ALL TIMES DURING CONSTRUCTION.



RAMBOLL AMERICAS ENGINEERING SOLUTIONS, INC.

Ravi Engineering & Land Surveying, P.C.

WARNING: THE ALTERATION OF THIS MATERIAL IN ANY WAY, UNLESS DONE UNDER THE DIRECTION OF A COMPARABLE PROFESSIONAL, I.E. ARCHITECT FOR AN ARCHITECT, ENGINEER FOR AN ENGINEER OR LANDSCAPE ARCHITECT FOR A LANDSCAPE ARCHITECT, IS A VIOLATION OF THE NEW YORK STATE EDUCATION LAW AND/OR REGULATIONS AND IS A CLASS "A" MISDEMEANOR.



P.E. LICENCE EXPIRES: 04/30/2027

P.E. LICENCE EXPIRES: 03/31/2027

CONTRACT: CONSTRUCTION

TITLE: REPLACE SEWER OUTFALL PIPE

LOCATION: GREEN HAVEN CORRECTIONAL FACILITY ROUTE 216 STORMVILLE, NEW YORK

CLIENT: DEPARTMENT OF CORRECTIONS AND COMMUNITY SUPERVISION

MARK	DATE	DESCRIPTION
0	02/26/2025	FINAL SUBMITTAL
PROJECT NUMBER: Q1869-C		
DESIGNED BY: D. CLARK		
DRAWN BY: W. DILONE		
FIELD CHECK:		
APPROVED:		

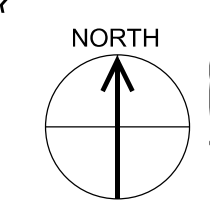
SHEET TITLE: UTILITY PLAN

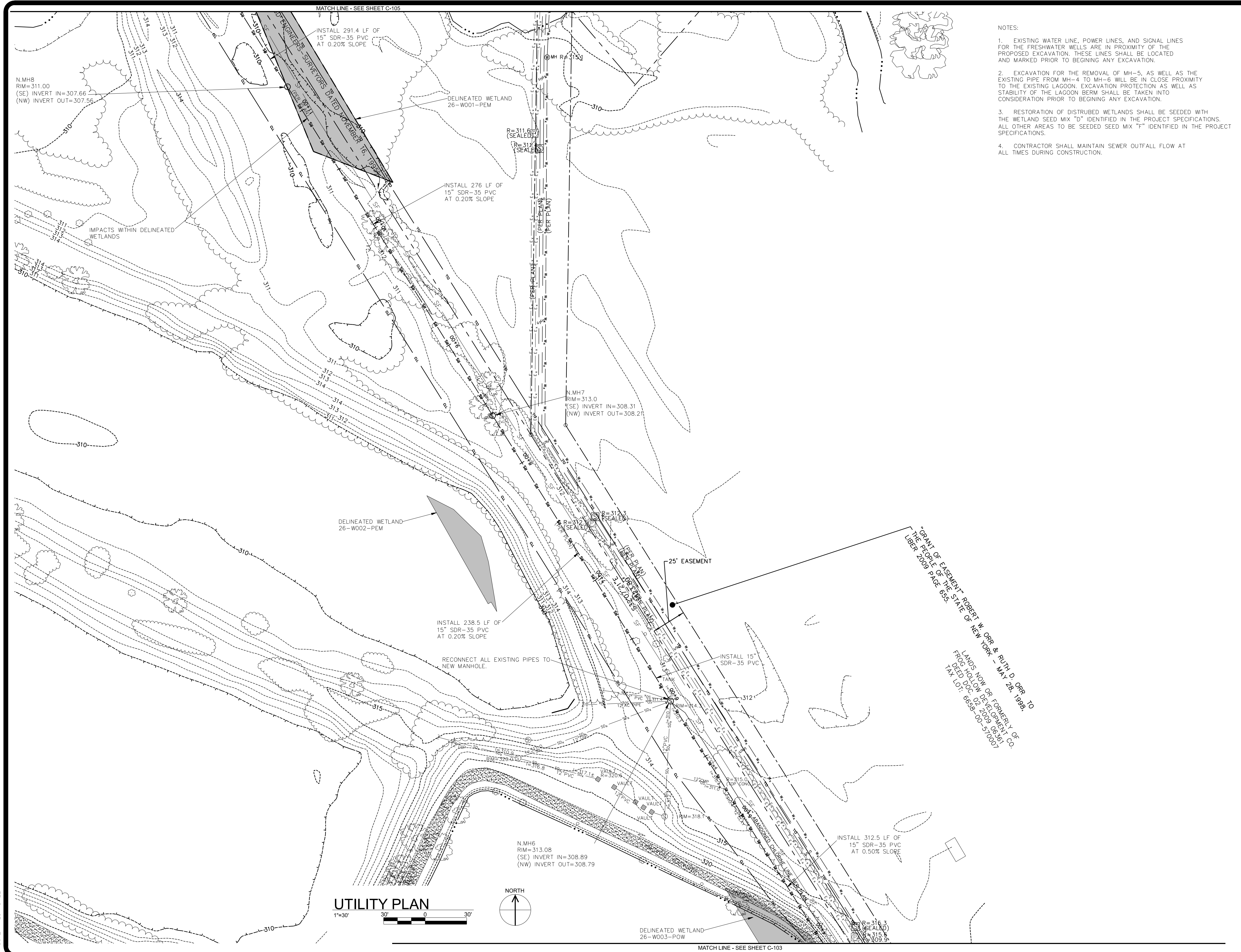
DRAWING NUMBER: C-103

36x24 PLOT SHEET

UTILITY PLAN

1"=30' 30' 0 30'





- NOTES:
- EXISTING WATER LINE, POWER LINES, AND SIGNAL LINES FOR THE FRESHWATER WELLS ARE IN PROXIMITY OF THE PROPOSED EXCAVATION. THESE LINES SHALL BE LOCATED AND MARKED PRIOR TO BEGINNING ANY EXCAVATION.
 - EXCAVATION FOR THE REMOVAL OF MH-5, AS WELL AS THE EXISTING PIPE FROM MH-4 TO MH-6 WILL BE IN CLOSE PROXIMITY TO THE EXISTING LAGOON. EXCAVATION PROTECTION AS WELL AS STABILITY OF THE LAGOON BERM SHALL BE TAKEN INTO CONSIDERATION PRIOR TO BEGINNING ANY EXCAVATION.
 - RESTORATION OF DISTURBED WETLANDS SHALL BE SEEDED WITH THE WETLAND SEED MIX "D" IDENTIFIED IN THE PROJECT SPECIFICATIONS. ALL OTHER AREAS TO BE SEEDED SEED MIX "F" IDENTIFIED IN THE PROJECT SPECIFICATIONS.
 - CONTRACTOR SHALL MAINTAIN SEWER OUTFALL FLOW AT ALL TIMES DURING CONSTRUCTION.

NEW YORK STATE OF OPPORTUNITY **Office of General Services**

DESIGN & CONSTRUCTION

CONSULTANT


CERTIFICATE OF AUTHORIZATION #1482116

RAMBOLL


RAMBOLL AMERICAS
ENGINEERING SOLUTIONS, INC.

Ravi Engineering & Land Surveying, P.C.

WARNING:
THE ALTERATION OF THIS MATERIAL IN ANY WAY, UNLESS DONE UNDER THE DIRECTION OF A COMPARABLE PROFESSIONAL, I.E. ARCHITECT FOR AN ARCHITECT, ENGINEER FOR AN ENGINEER OR LANDSCAPE ARCHITECT FOR A LANDSCAPE ARCHITECT, IS A VIOLATION OF THE NEW YORK STATE EDUCATION LAW AND/OR REGULATIONS AND IS A CLASS "A" MISDEMEANOR.



P.E. LICENCE EXPIRES:
04/30/2027



P.E. LICENCE EXPIRES:
03/31/2027

CONTRACT: CONSTRUCTION

TITLE: REPLACE SEWER OUTFALL PIPE

LOCATION: GREEN HAVEN CORRECTIONAL FACILITY
ROUTE 216 STORMVILLE, NEW YORK

CLIENT: DEPARTMENT OF CORRECTIONS
AND COMMUNITY SUPERVISION

MARK	DATE	DESCRIPTION
0	02/26/2025	FINAL SUBMITTAL

PROJECT NUMBER: Q1869-C

DESIGNED BY: D. CLARK

DRAWN BY: W. DILONE

FIELD CHECK:

APPROVED:

SHEET TITLE: UTILITY PLAN

DRAWING NUMBER: C-104

SHEET 8 OF 12

36x24 PLOT SHEET

UTILITY PLAN



MATCH LINE - SEE SHEET C-103

"GRANT OF EASEMENT" ROBERT W. ORR & RUTH D. ORR TO
 THE PEOPLE OF THE STATE OF NEW YORK - MAY 26, 1998.
 LIBER 2009 PAGE 855.
 LANDS NOW OR FORMERLY OF
 FROG HOLLOW DEVELOPMENT CO.
 DEED DOC. 02-2009-06365
 TAX LOT: 0658-00-51-0007



RAMBOLL AMERICAS
ENGINEERING SOLUTIONS, INC.

R
RAVI ENGINEERING
& LAND SURVEYING, P.C.

WARNING:
THE ALTERATION OF THIS MATERIAL IN ANY WAY, UNLESS DONE UNDER THE DIRECTION OF A COMPARABLE PROFESSIONAL, I.E. ARCHITECT FOR AN ARCHITECT, ENGINEER FOR AN ENGINEER OR LANDSCAPE ARCHITECT FOR A LANDSCAPE ARCHITECT, IS A VIOLATION OF THE NEW YORK STATE EDUCATION LAW AND/OR REGULATIONS AND IS A CLASS "A" MISDEMEANOR.

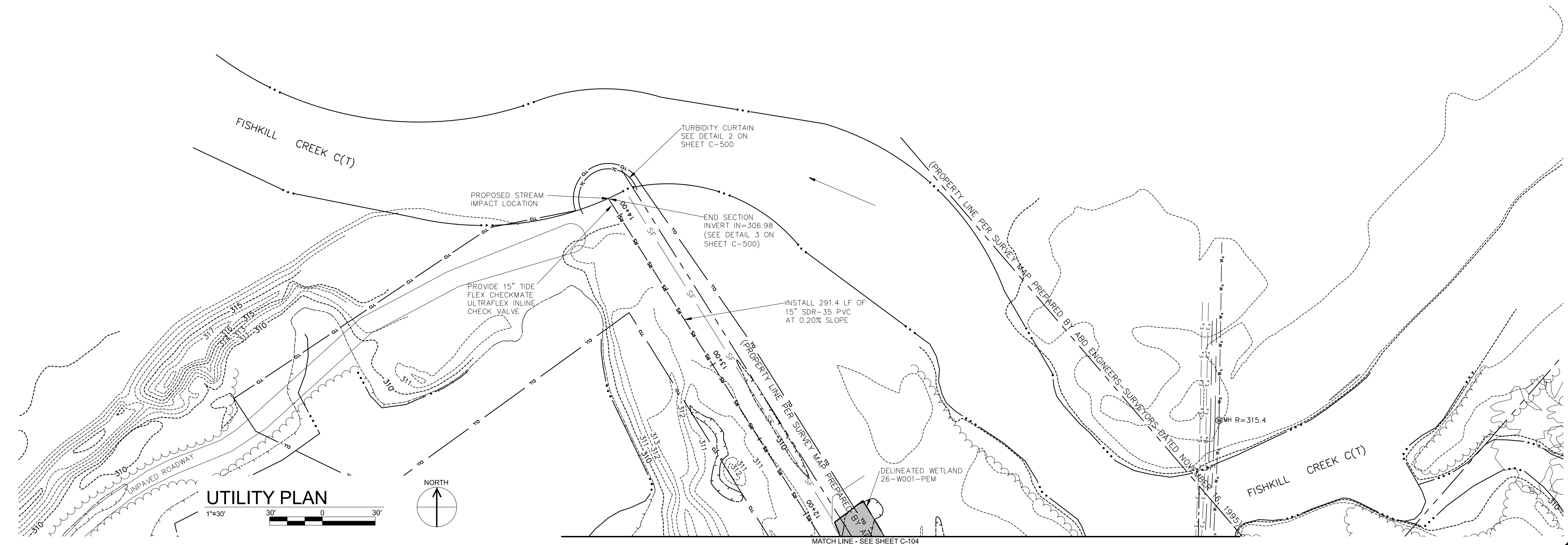


P.E. LICENCE EXPIRES: 04/30/2027
P.E. LICENCE EXPIRES: 03/31/2027

CONTRACT: CONSTRUCTION
TITLE: REPLACE SEWER OUTFALL PIPE
LOCATION: GREEN HAVEN CORRECTIONAL FACILITY
ROUTE 216 STORMVILLE, NEW YORK
CLIENT: DEPARTMENT OF CORRECTIONS
AND COMMUNITY SUPERVISION

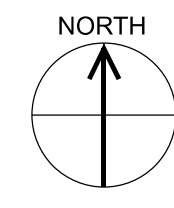
MARK	DATE	DESCRIPTION
0	02/26/2025	FINAL SUBMITAL
PROJECT NUMBER: Q1869-C		
DESIGNED BY: D. CLARK		
DRAWN BY: W. DILONE		
FIELD CHECK:		
APPROVED:		
SHEET TITLE: UTILITY PLAN		
DRAWING NUMBER: C-105		
SHEET 9 OF 12		

- NOTES:
- EXISTING WATER LINE, POWER LINES, AND SIGNAL LINES FOR THE FRESHWATER WELLS ARE IN PROXIMITY OF THE PROPOSED EXCAVATION. THESE LINES SHALL BE LOCATED AND MARKED PRIOR TO BEGINNING ANY EXCAVATION.
 - RESTORATION OF DISTURBED WETLANDS SHALL BE SEEDED WITH THE WETLAND SEED MIX "D" IDENTIFIED IN THE PROJECT SPECIFICATIONS. ALL OTHER AREAS TO BE SEEDED SEED MIX "F" IDENTIFIED IN THE PROJECT SPECIFICATIONS.
 - CONTRACTOR SHALL MAINTAIN SEWER OUTFALL FLOW AT ALL TIMES DURING CONSTRUCTION.

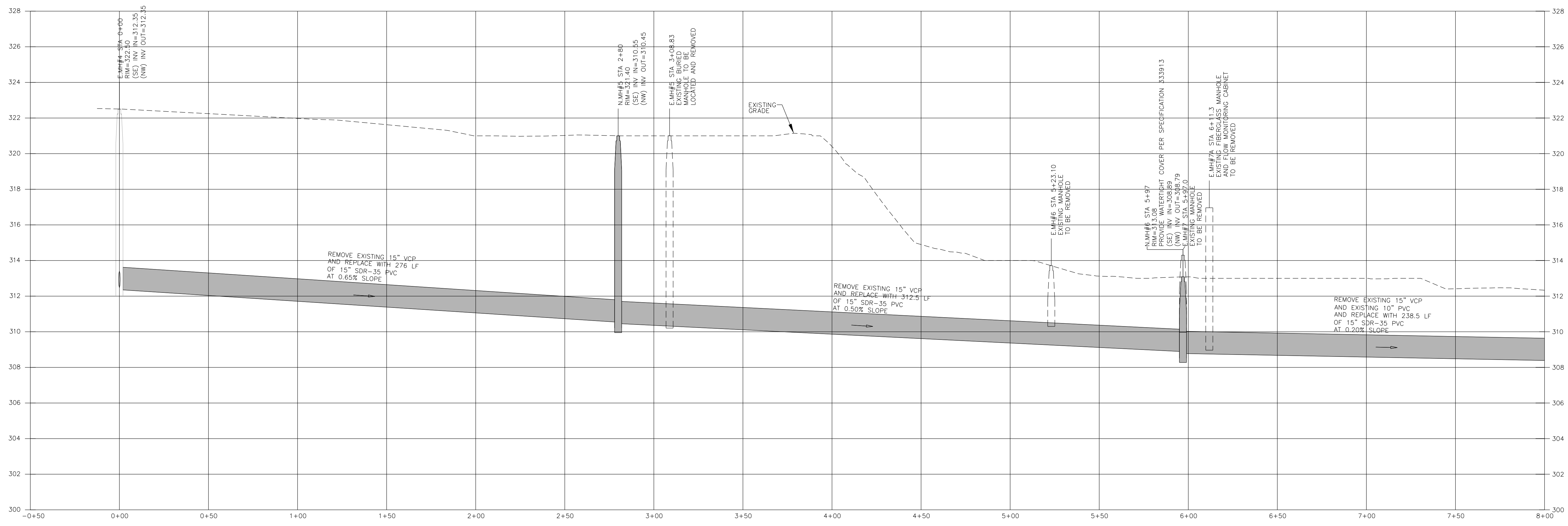


36x24 PLOT SHEET

UTILITY PLAN

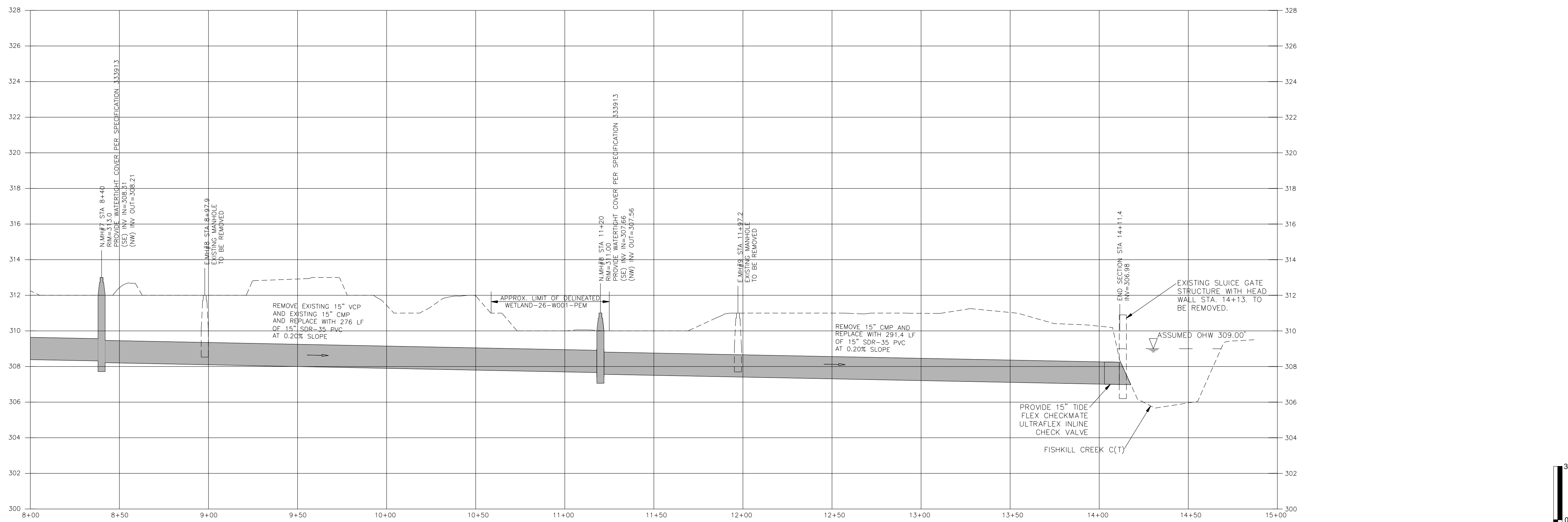


MATCH LINE - SEE SHEET C-104



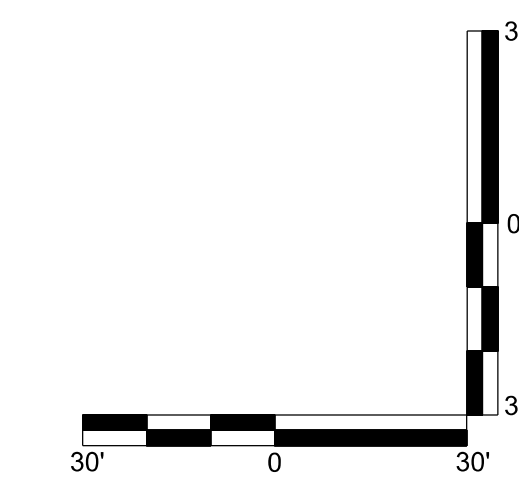
SEWER CENTERLINE PROFILE (STA. 0+00 TO 8+00)

SCALE: HORIZONTAL 1" = 30'
VERTICAL 1" = 3'



SEWER CENTERLINE PROFILE (STA. 8+00 TO 14+14)

SCALE: HORIZONTAL 1" = 30'
VERTICAL 1" = 3'



WARNING:
THE ALTERATION OF THIS MATERIAL IN ANY WAY, UNLESS DONE UNDER THE DIRECTION OF A COMPARABLE PROFESSIONAL, I.E. ARCHITECT FOR AN ARCHITECT, ENGINEER FOR AN ENGINEER OR LANDSCAPE ARCHITECT FOR A LANDSCAPE ARCHITECT, IS A VIOLATION OF THE NEW YORK STATE EDUCATION LAW AND/OR REGULATIONS AND IS A CLASS "A" MISDEMEANOR.



P.E. LICENSE EXPIRES: 04/30/2027 | P.E. LICENSE EXPIRES: 03/31/2027

CONTRACT: CONSTRUCTION

TITLE: REPLACE SEWER OUTFALL PIPE

LOCATION: GREEN HAVEN CORRECTIONAL FACILITY
ROUTE 216 STORMVILLE, NEW YORK

CLIENT: DEPARTMENT OF CORRECTIONS
AND COMMUNITY SUPERVISION

MARK	DATE	DESCRIPTION
0	02/26/2025	FINAL SUBMITTAL

PROJECT NUMBER: Q1869-C

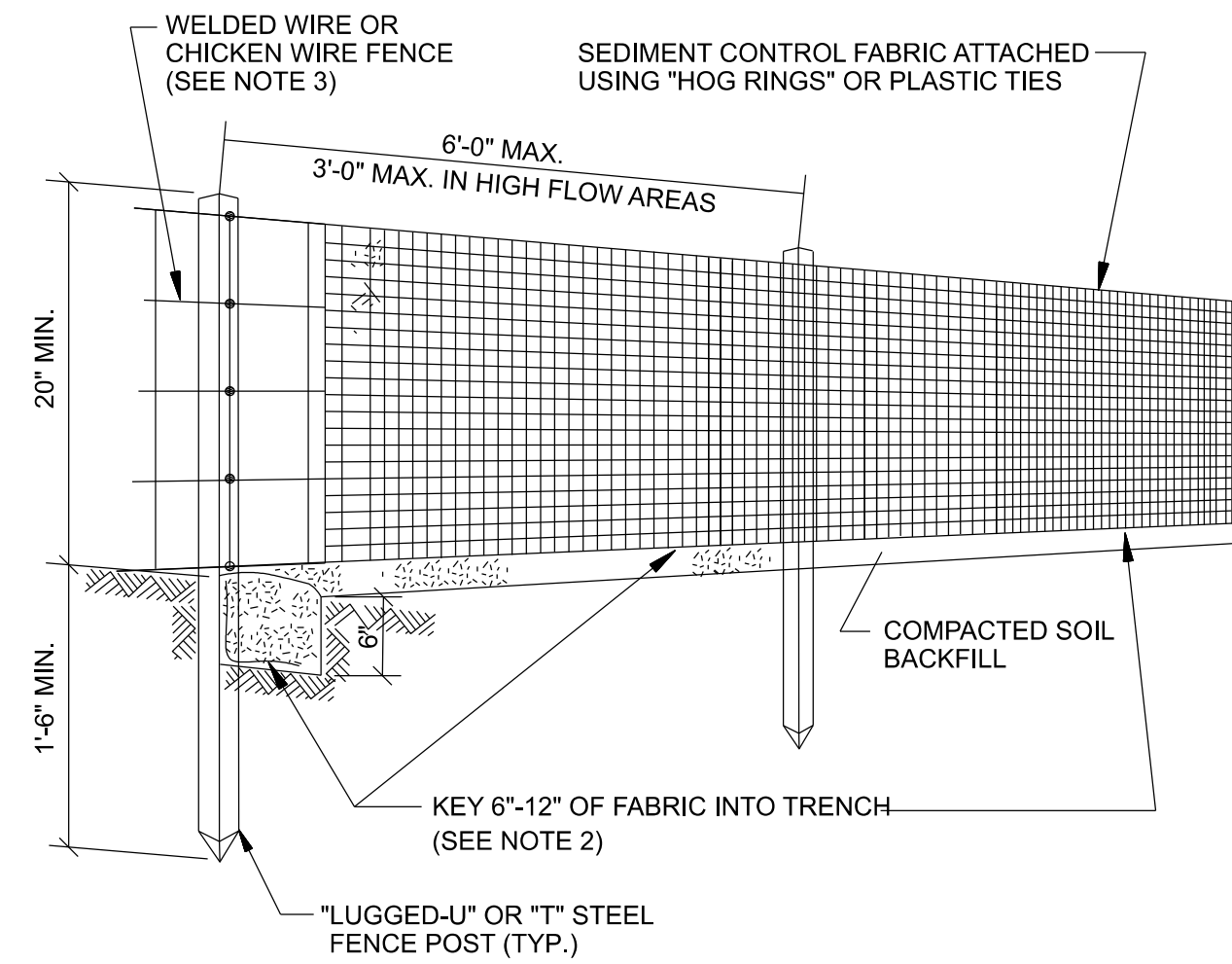
DESIGNED BY: D. CLARK

DRAWN BY: W. DILONE

FIELD CHECK:

APPROVED:

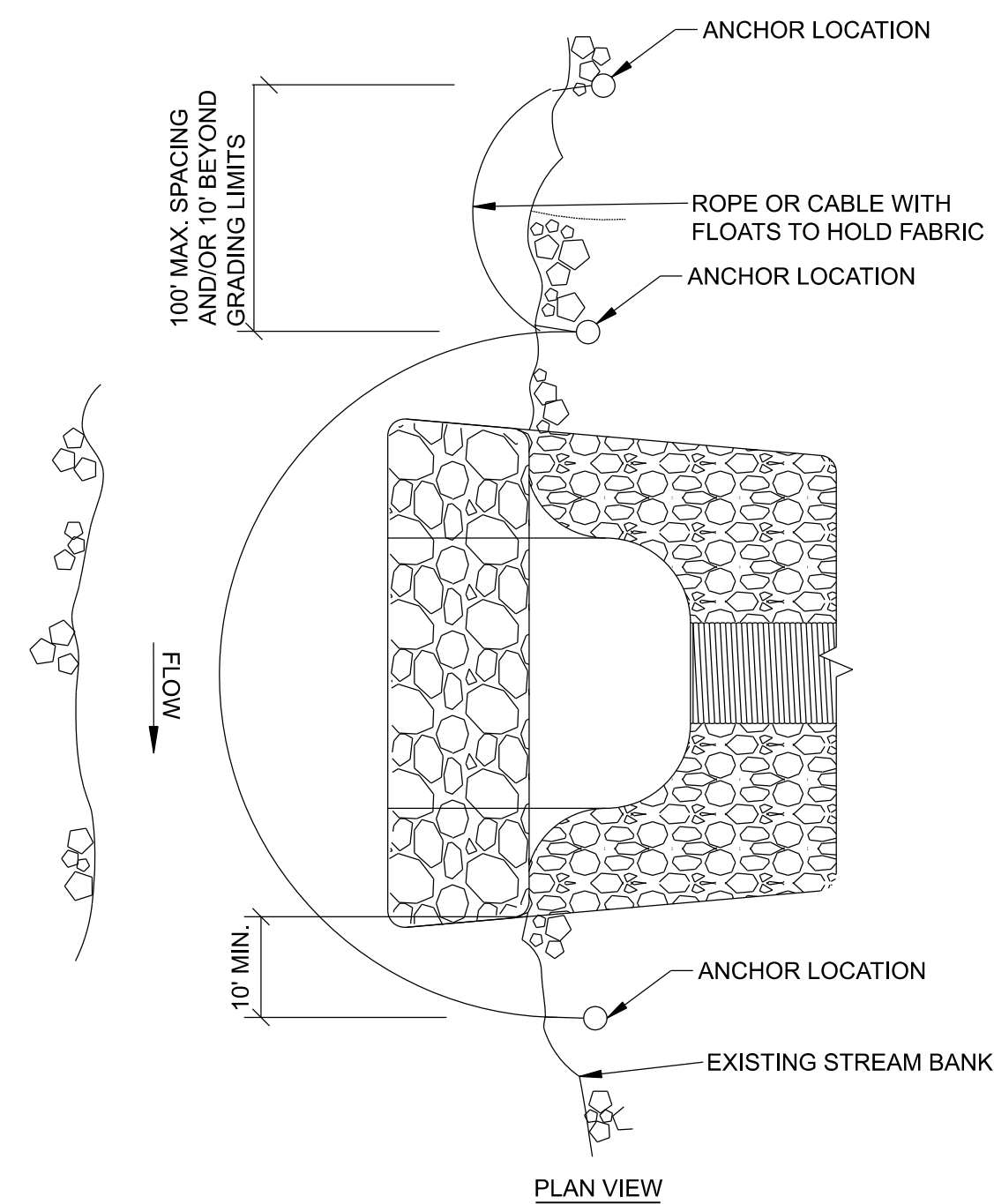
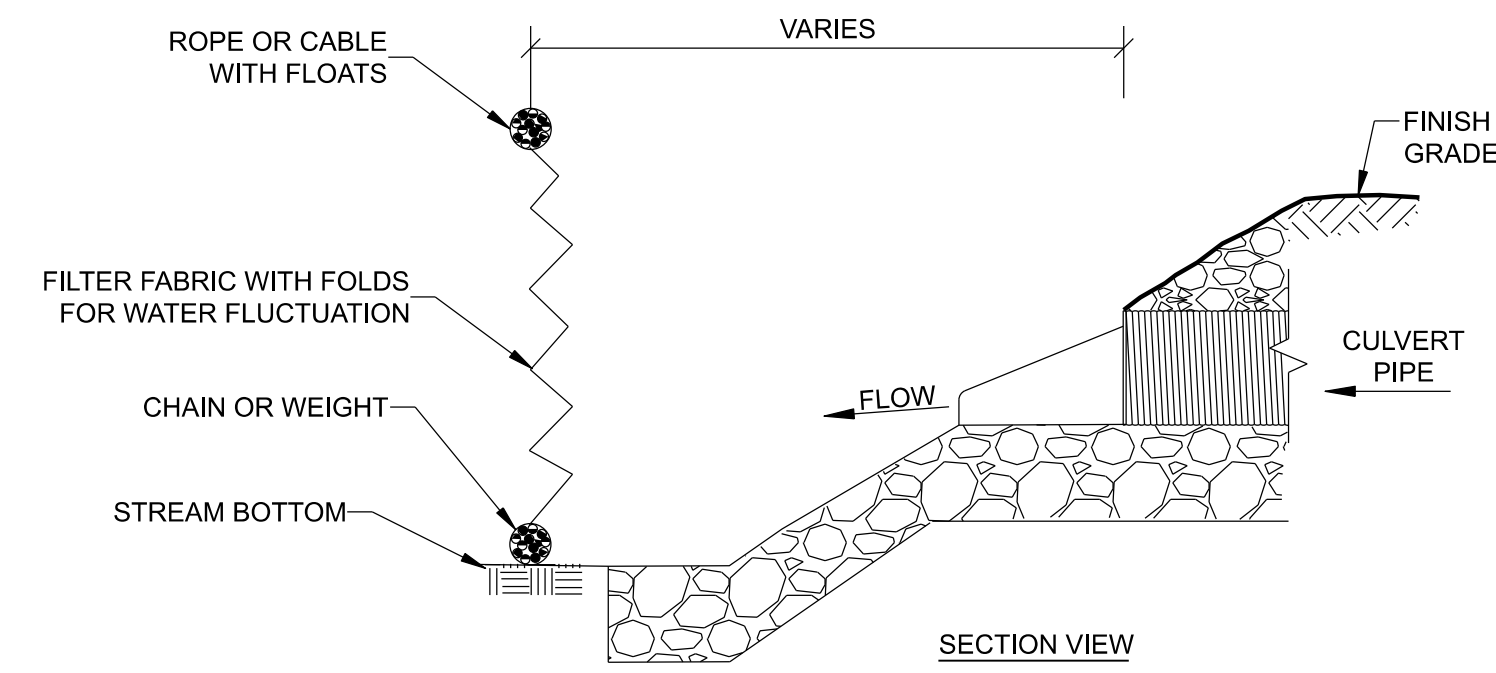
36x24 PLOT SHEET



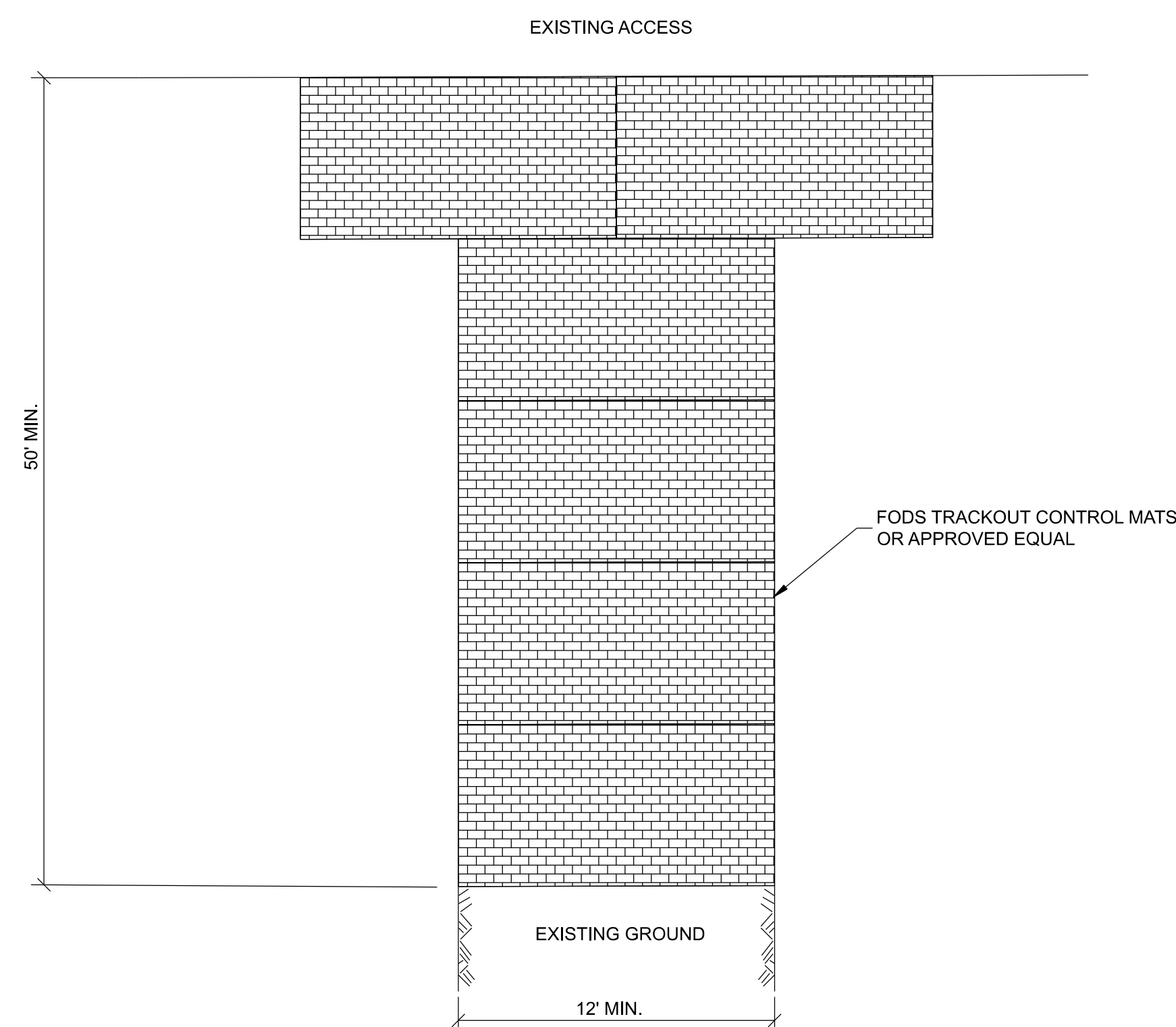
DETAIL NOTES:

1. PRE-MANUFACTURED SILT FENCE SUCH AS ENVIROFENCE BY MIRAFI OR APPROVED EQUAL. IN SUCH CASE, ELIMINATE WELDED WIRE/ CHICKEN WIRE FENCE.
2. KEY TOWARD UPSLOPE SIDE.
3. WELDED WIRE SHALL BE 14.5 GAUGE WITH 6-INCH MESH.

1 SILT FENCE DETAIL
NOT TO SCALE



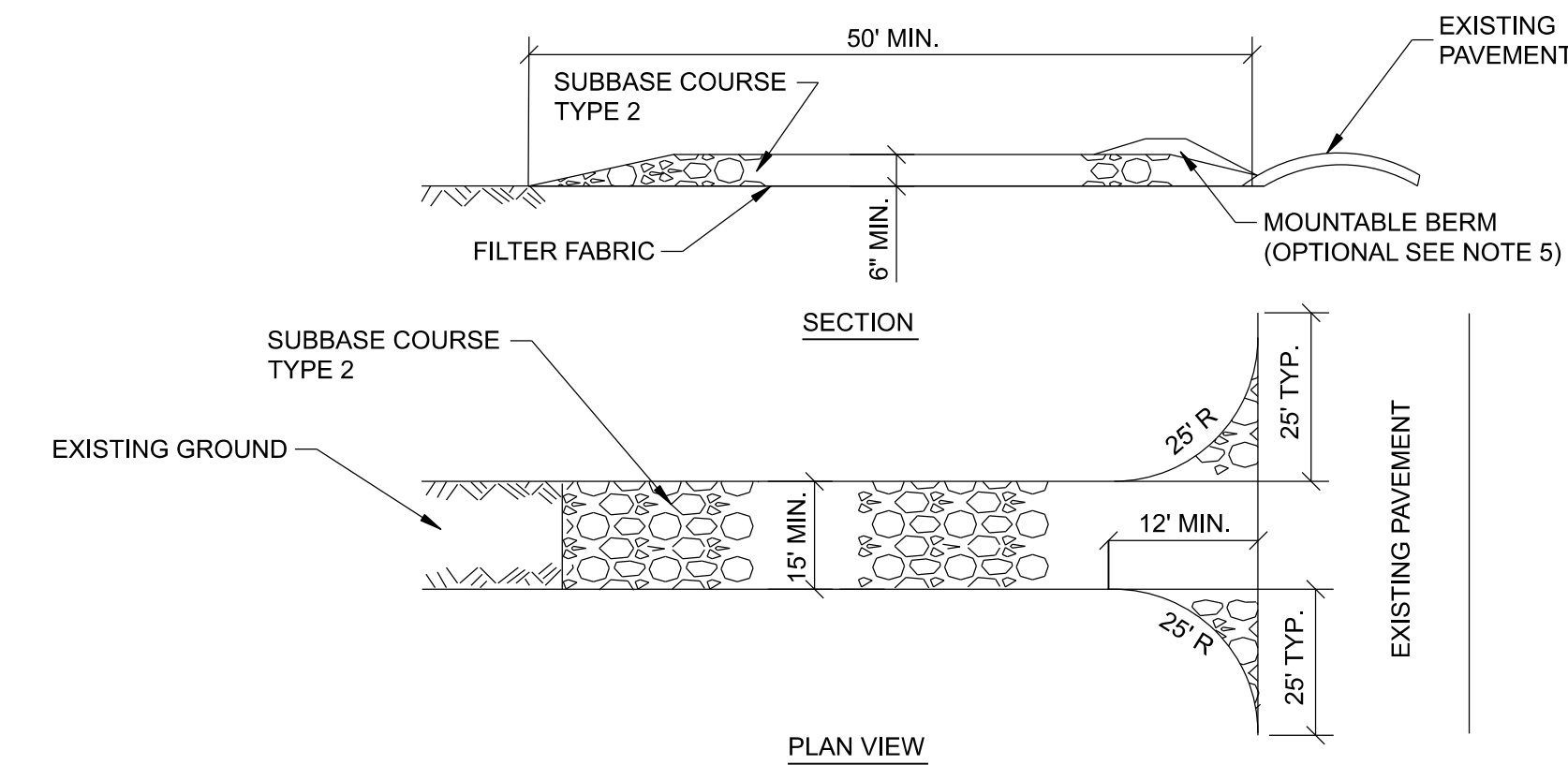
2 TURBIDITY CURTAIN DETAIL
NOT TO SCALE



DETAIL NOTES:

1. LENGTH: NOT LESS THAN 50 FEET
2. INSTALL "FODS TRACKOUT CONTROL MATS" OR EQUAL PER MANUFACTURES REQUIREMENTS AND PROCEDURES.
3. MAINTENANCE - MAINTAIN THE ENTRANCE IN A CONDITION WHICH WILL PREVENT TRACKING OR FLOWING OF SEDIMENT ONTO PUBLIC RIGHTS-OF-WAY. SEDIMENT SPILLED, DROPPED, WASHED OR TRACKED ONTO PUBLIC RIGHTS-OF-WAY MUST BE REMOVED IMMEDIATELY.
4. WASHING - CLEAN THE WHEELS TO REMOVE SEDIMENT PRIOR TO ENTRANCE ONTO PUBLIC RIGHTS-OF-WAY. IT SHALL BE DONE ON TRACKOUT MATS.
5. RESTORE AREA TO LAWN. (PRE-WORK CONDITIONS.)
6. CONTRACTOR HAS THE OPTION TO UTILIZE DETAIL 4 OR DETAIL 5 FOR THE STABILIZED CONSTRUCTION ENTRANCE.

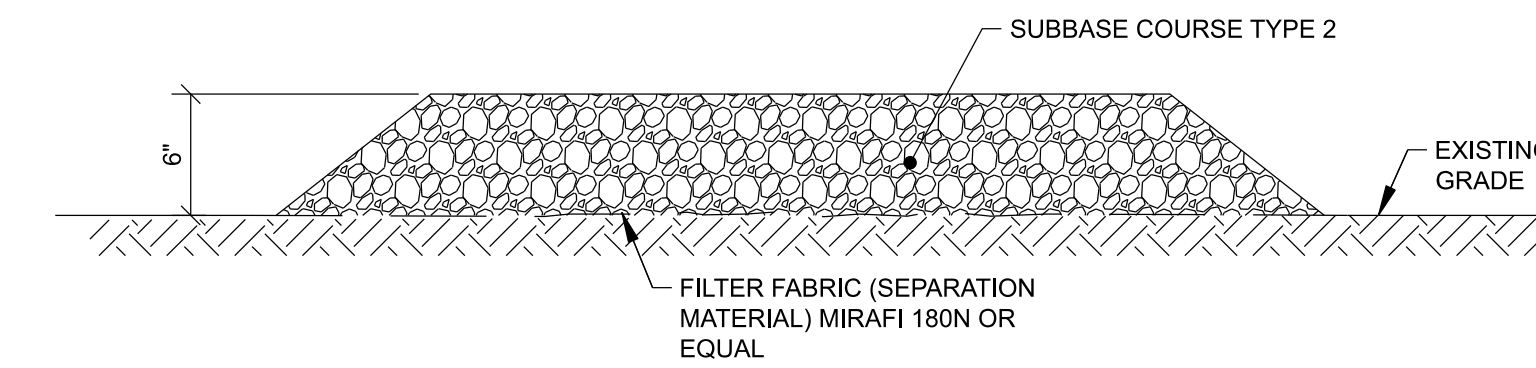
4 FODS TRACKOUT CONTROL MATS
NOT TO SCALE



DETAIL NOTES:

1. LENGTH: NOT LESS THAN 50 FEET
2. THICKNESS: NOT LESS THAN 6 INCHES.
3. WIDTH - AS SHOWN ON PLANS, NOT LESS THAN 15'.
4. FILTER FABRIC - PLACE OVER THE ENTIRE AREA PRIOR TO PLACING OF STONE.
5. SURFACE WATER - SURFACE WATER FLOWING TOWARDS CONSTRUCTION ENTRANCE SHALL BE DIVERTED OR PIPED ACROSS THE ENTRANCE. IF PIPING IS NOT POSSIBLE, A MOUNTABLE BERM 3' WIDE (MIN.) WITH 5:1 SLOPES WILL BE PERMITTED.
6. MAINTENANCE - MAINTAIN THE ENTRANCE IN A CONDITION WHICH WILL PREVENT TRACKING OR FLOWING OF SEDIMENT ONTO PUBLIC RIGHTS-OF-WAY. SEDIMENT SPILLED, DROPPED, WASHED OR TRACKED ONTO PUBLIC RIGHTS-OF-WAY MUST BE REMOVED IMMEDIATELY.
7. WASHING - CLEAN THE WHEELS TO REMOVE SEDIMENT PRIOR TO ENTRANCE ONTO PUBLIC RIGHTS-OF-WAY. IT SHALL BE DONE ON AN AREA STABILIZED WITH STONE.
8. RESTORE AREA TO LAWN. (PRE-WORK CONDITIONS.)
9. CONTRACTOR HAS THE OPTION TO UTILIZE DETAIL 4 OR DETAIL 5 FOR THE STABILIZED CONSTRUCTION ENTRANCE.

5 TYPICAL OFFSITE SEDIMENT TRACKING DETAIL
NOT TO SCALE



NOTES:

1. TEMPORARY STAGING AREA TO BE REMOVED WHEN WORK IS COMPLETE.
2. RESTORE AREA TO PRE-WORK CONDITION.

3 PRIMARY STAGING/STORAGE AREA SECTION
NOT TO SCALE



RAMBOLL AMERICAS
ENGINEERING SOLUTIONS, INC.

RAVI ENGINEERING & LAND SURVEYING, P.C.

WARNING:

THE ALTERATION OF THIS MATERIAL IN ANY WAY, UNLESS DONE UNDER THE DIRECTION OF A COMPARABLE PROFESSIONAL, I.E. ARCHITECT FOR AN ARCHITECT, ENGINEER FOR AN ENGINEER OR LANDSCAPE ARCHITECT FOR A LANDSCAPE ARCHITECT, IS A VIOLATION OF THE NEW YORK STATE EDUCATION LAW AND/OR REGULATIONS AND IS A CLASS "A" MISDEMEANOR.



P.E. LICENCE EXPIRES: 04/30/2027

P.E. LICENCE EXPIRES: 03/31/2027

CONTRACT: CONSTRUCTION

TITLE: REPLACE SEWER OUTFALL PIPE

LOCATION: GREEN HAVEN CORRECTIONAL FACILITY
ROUTE 216 STORMVILLE, NEW YORK

CLIENT: DEPARTMENT OF CORRECTIONS
AND COMMUNITY SUPERVISION

MARK	DATE	DESCRIPTION
0	02/26/2025	FINAL SUBMITTAL
PROJECT NUMBER:	Q1869-C	
DESIGNED BY:	D. CLARK	
DRAWN BY:	W. DILONE	
FIELD CHECK:		
APPROVED:		

SHEET TITLE:
EROSION AND SEDIMENT CONTROL DETAILS

DRAWING NUMBER:
C-500



RAMBOLL AMERICAS
ENGINEERING SOLUTIONS, INC.

Ravi Engineering & Land Surveying, P.C.

WARNING:
THE ALTERATION OF THIS MATERIAL IN ANY WAY, UNLESS DONE UNDER THE DIRECTION OF A COMPARABLE PROFESSIONAL, I.E. ARCHITECT FOR AN ARCHITECT, ENGINEER FOR AN ENGINEER OR LANDSCAPE ARCHITECT FOR A LANDSCAPE ARCHITECT, IS A VIOLATION OF THE NEW YORK STATE EDUCATION LAW AND/OR REGULATIONS AND IS A CLASS "A" MISDEMEANOR.



P.E. LICENCE EXPIRES: 04/30/2027 P.E. LICENCE EXPIRES: 03/31/2027

CONTRACT: CONSTRUCTION

TITLE: REPLACE SEWER OUTFALL PIPE

LOCATION: GREEN HAVEN CORRECTIONAL FACILITY
ROUTE 216 STORMVILLE, NEW YORK

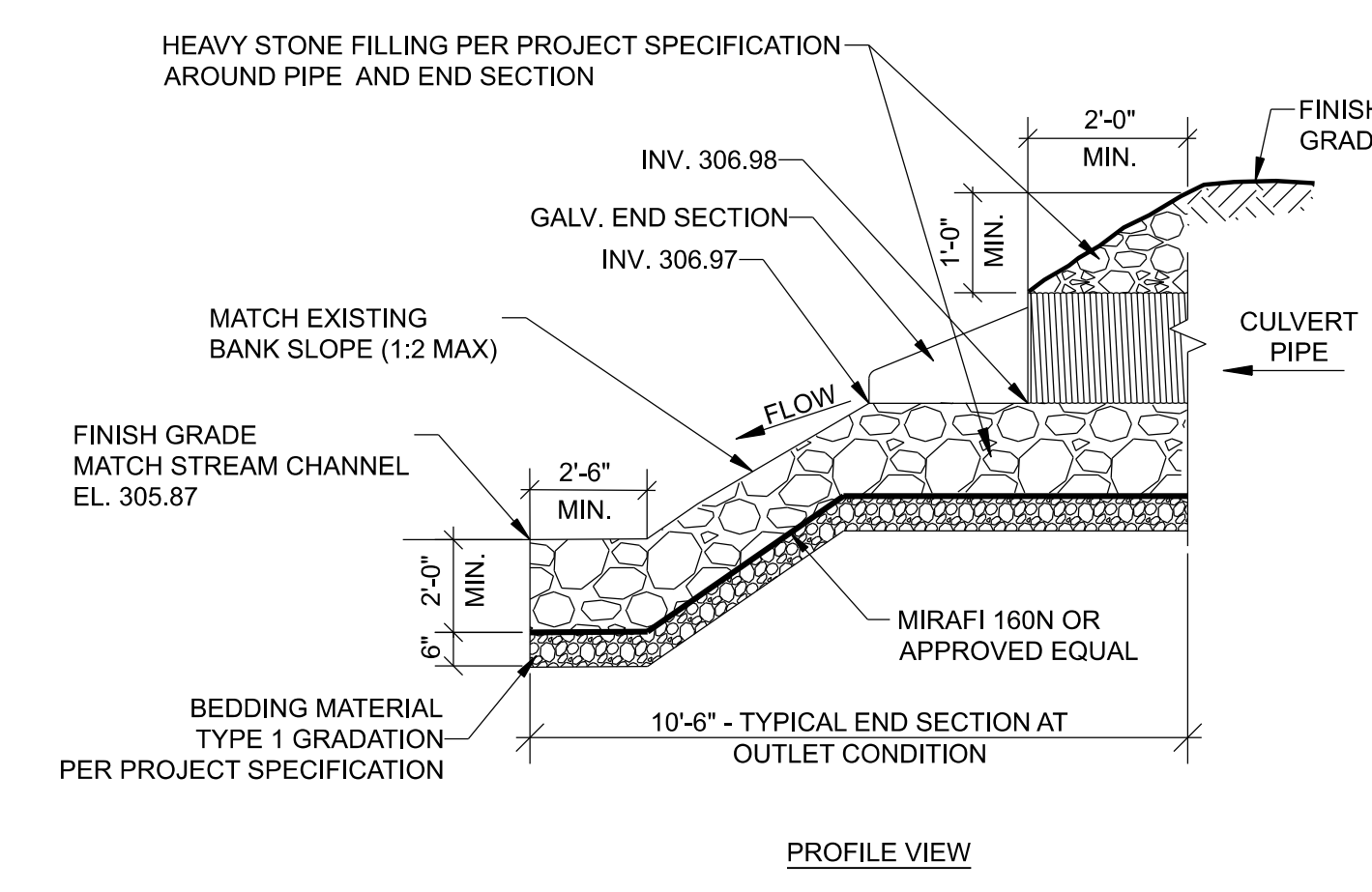
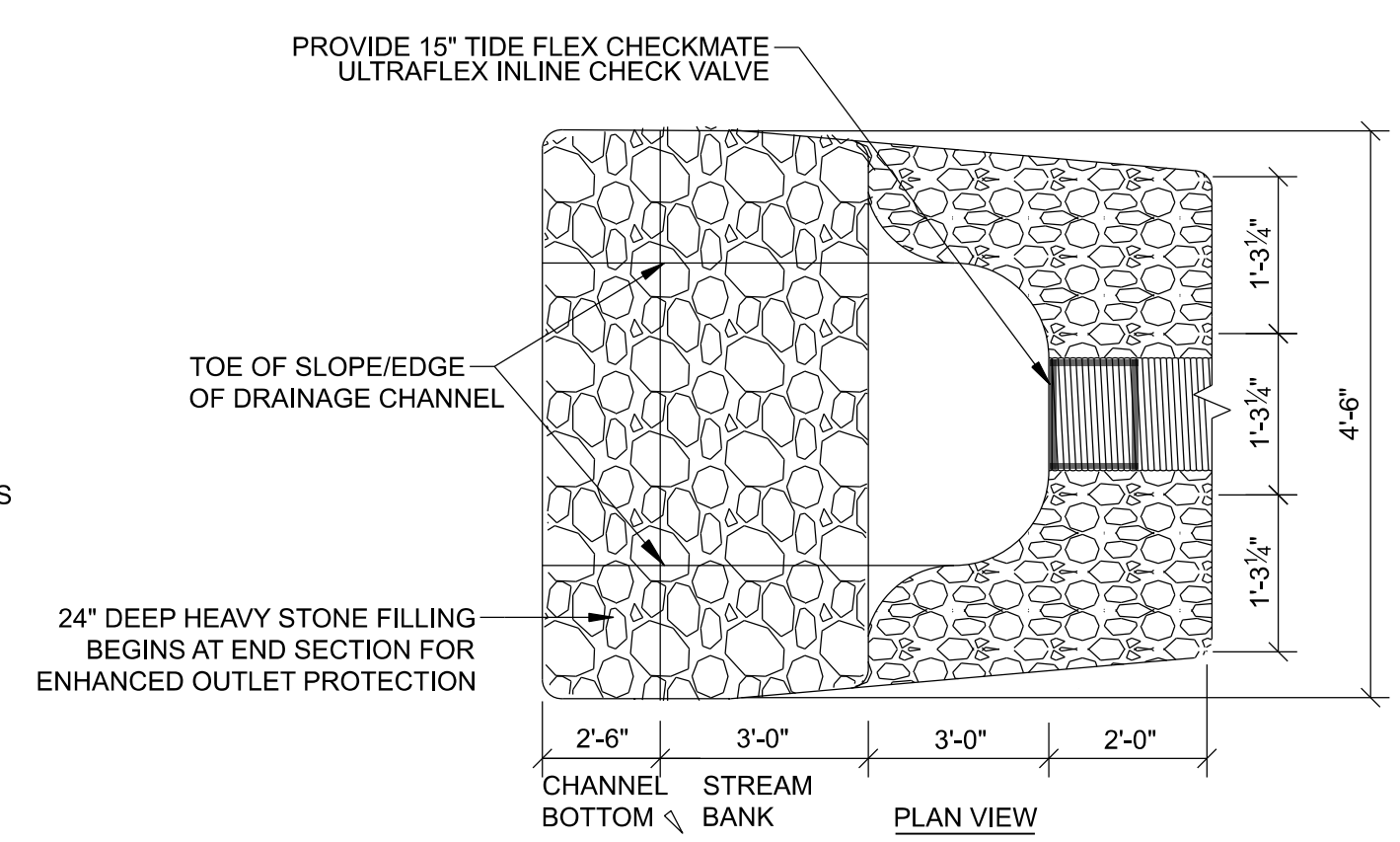
CLIENT: DEPARTMENT OF CORRECTIONS
AND COMMUNITY SUPERVISION

MARK	DATE	DESCRIPTION
0	02/26/2025	FINAL SUBMITTAL

PROJECT NUMBER: Q1869-C
DESIGNED BY: D. CLARK
DRAWN BY: W. DILONE
FIELD CHECK:
APPROVED:

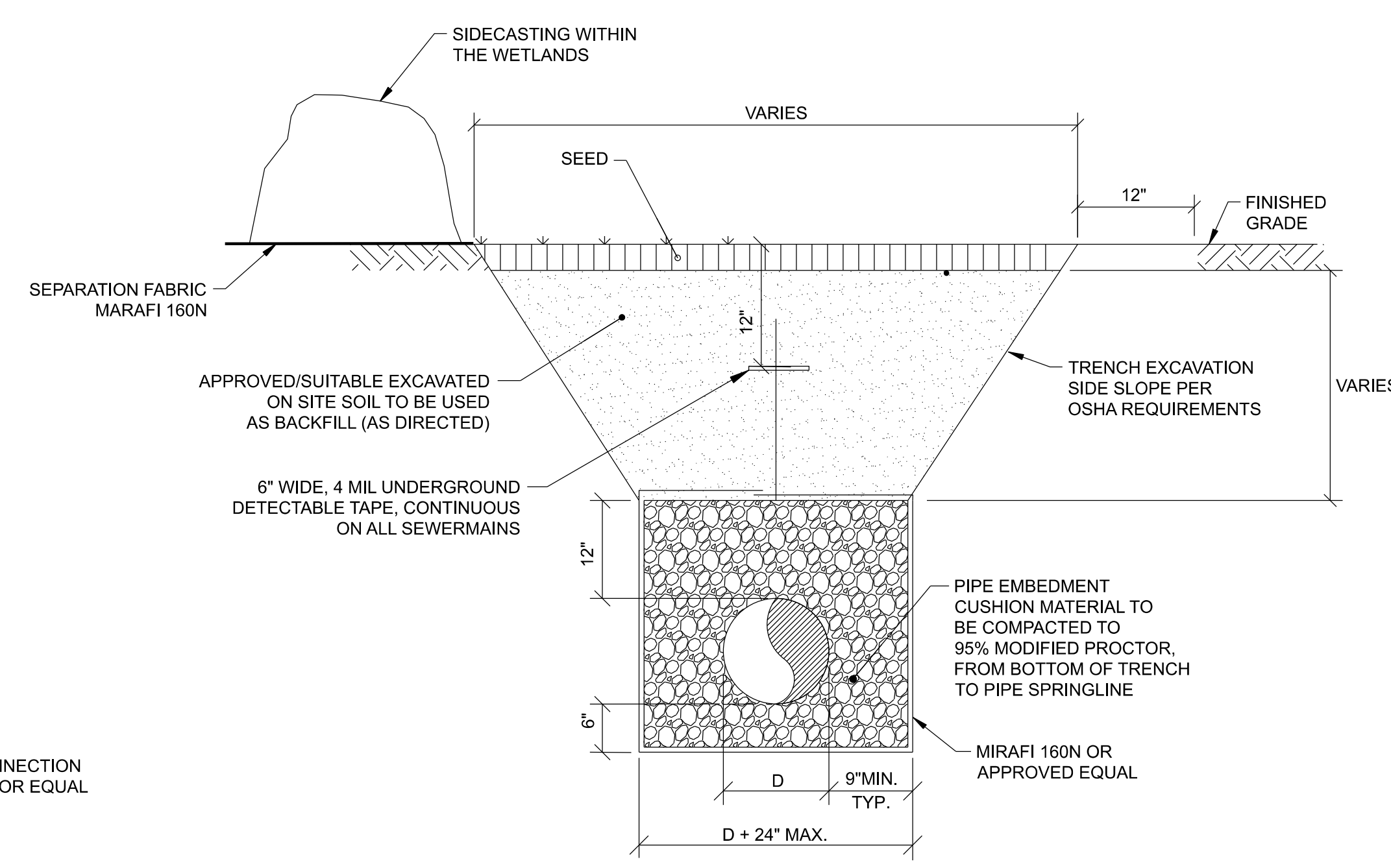
SHEET TITLE:
SEWER DETAILS

DRAWING NUMBER:
C-501



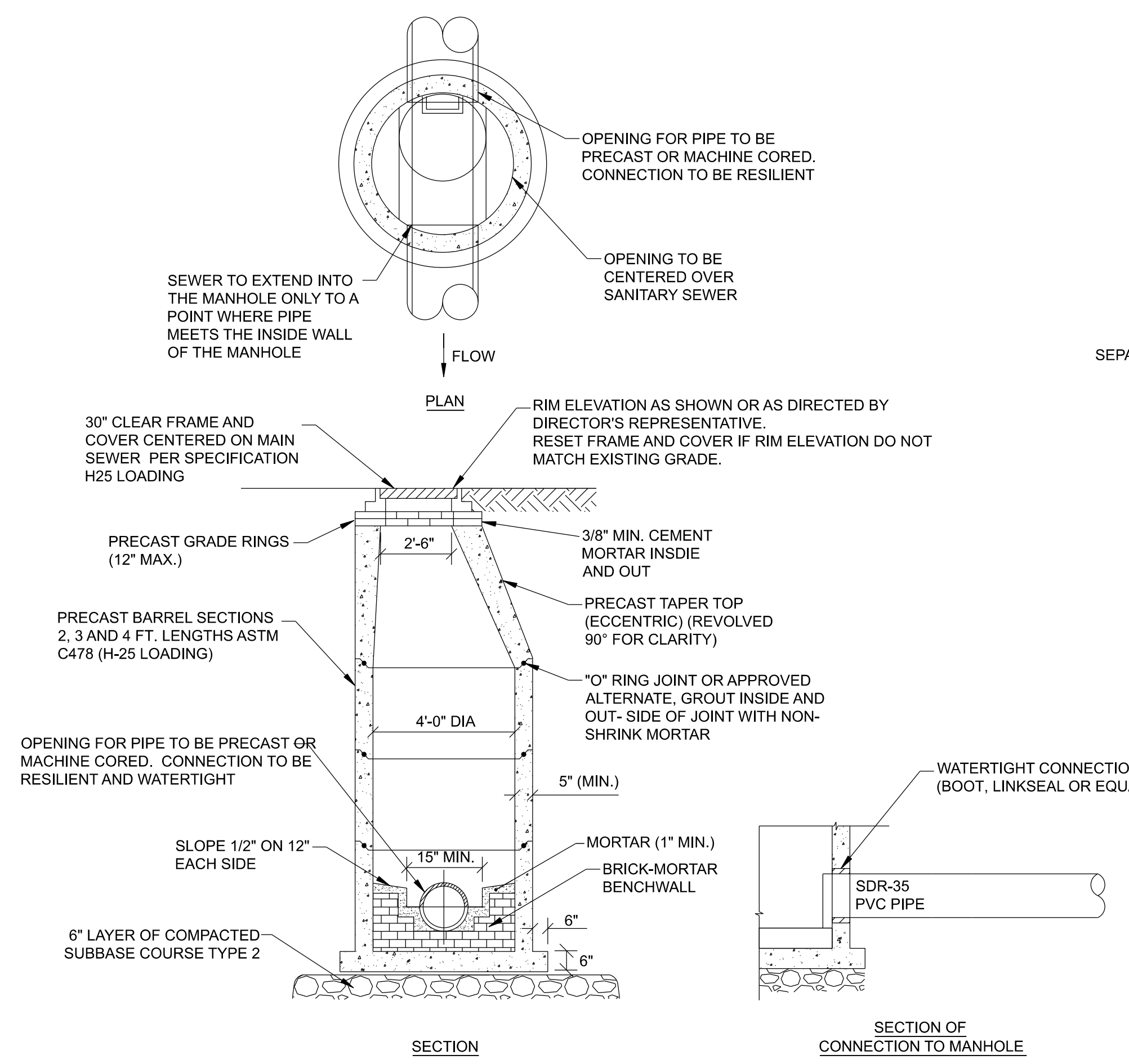
3 TYPICAL CULVERT END SECTION DETAIL
NOT TO SCALE

- NOTES:
- CHANNEL BOTTOM ELEVATION TO BE VERIFIED DURING CONSTRUCTION.



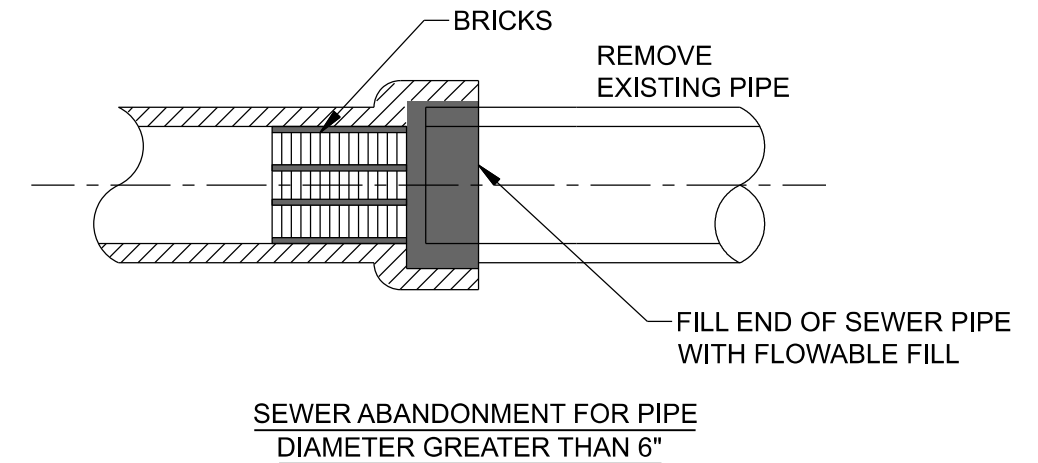
2 TYPICAL SANITARY TRENCH DETAIL
NOT TO SCALE

- NOTES:
- RESTORE EXCAVATED AREAS TO EXISTING CONDITIONS AND MATCH ADJACENT ELEVATIONS AND GRADE.
 - AREAS LOCATED WITHIN WETLAND AREAS TO BE SEEDED WITH SEED MIX "D" PER PROJECT SPECIFICATIONS.
 - ALL OTHER AREAS TO BE SEEDED WITH SEED MIX "F" PER PROJECT SPECIFICATIONS.
 - ALL SIDECAST MATERIAL WITHIN THE WETLANDS SHALL BE PLACED ON FILTER FABRIC DURING TRENCHING. UPON COMPLETION OF PIPE INSTALLATION, SIDECAST MATERIAL WILL BE REPLACED WITHIN THE TRENCH. ANY EXCESS MATERIAL SHALL BE REMOVED AND DISPOSED OF OFF-SITE IN ACCORDANCE WITH FEDERAL, STATE, AND LOCAL REGULATIONS.



1 TYPE 'A' STANDARD PRECAST MANHOLE DETAIL
NOT TO SCALE

- NOTES:
- ALL MANHOLES TO HAVE A 4' INSIDE DIAMETER EXCEPT MANHOLE 6 WHICH WILL HAVE A 5' INSIDE DIAMETER.
 - MANHOLE 8 WILL REQUIRE A TOP SLAB.
 - PROVIDE WATERTIGHT COVER FOR N.MH #6,7, AND 8 PER SPECIFICATION 333913



4 ABANDONED PIPE DETAIL
NOT TO SCALE

- NOTES:
- SEWER ABANDONMENT MUST BE WITNESSED BY THE DIRECTOR'S REPRESENTATIVE. NOTIFY DIRECTOR'S REPRESENTATIVE A MINIMUM OF 48-HOURS IN ADVANCE OF CONSTRUCTION FOR INSPECTION OF THE SEWER ABANDONMENT.
 - BRICK FOR PLUG: ASTM C-32, GRADE SS